



SYDNEY HARBOUR CHALLENGE WEEKEND

Friday Saturday & Sunday 1 – 3 March 2024

EVENT PROGRAM

Sydney Harbour Mini Challenge: 01 March 2024

Sydney Harbour Challenge: 02 March 2024

OZONE R3 Kurnell Downwinder: 03 March 2024

SHC Race Director Land: John Grimes 0448 366 032

SHC Race Director Water: Adam Rakowski 0402 320 797

Kurnell DW Race Director: Chris Berry 0413 772 672



Welcome Message AOCRA

On behalf of the Board of the Australian Outrigging Canoe Racing Association (AOCRA), it is with great pleasure that I welcome athletes, coaches, sponsors, officials, guests and supporters to our premier weekend of racing in Sydney. We look forward to hosting you all for the Sydney Harbour Mini Challenge, Sydney Harbour Challenge events hosted in partnership with Bondi Outriggers and the Ozone R3 Kurnell Downwinder hosted in partnership with Kurnell Outriggers.

We are thrilled to welcome all AOCRA members and International paddlers racing with five races on the program across three days. This year is very special as we celebrate 10 years of outrigger racing on the world renowned Sydney Harbour. Let's celebrate this fantastic achievement together and make history.

We pay our respects to the Birrabirragal people the Traditional Owners and Custodians of this land, to their Elders, past, present and emerging. Thanks as well to the local community for embracing the visiting competitors, officials, volunteers and supporters.

I would also like to wish every participant the very best of luck in this race and hope everyone present enjoys the day. While you compete with each other, we ask that you respect the same rules, share the ocean, the power and the spirit of outriggering with your fellow paddlers.

Enjoy the race and experience everyone.



Michael Seay
President AOCRA

Important Information – Paddler Verification (collection of wristbands) & Shirt Collection



ALL verification for teams/ individual competitors will take place on location from:

FRIDAY

- 10.00 AM Friday 01st March– Friday Club teams and individual paddlers only
- 12.30 PM – 5.00 PM Friday 01st March for Saturday teams

SATURDAY

- 6.00 AM – 6.30 AM Saturday 02nd March for Mixed teams only
- 7.30 AM – 12.30 PM Saturday 02nd March for all other teams.

The Club Manager will be required to represent their club competitors and facilitate certification process.

All clubs will have a nominated Club Manager. They will collect the club list with wrist bands and pass wristbands on to all club competitors. They will verify on behalf of the club that wristbands will only be given to paddlers on the club team list. This officer will also collect the club race shirts. They will need to come to the desk with a list of sizes required and how many of each size. Size graph and race shirt form to bring to collection desk will be provided to all clubs by email.

Clubs with large nominations should bring a non-plastic bag to collect race shirts.

All competitors must wear the wristband. No wrist band, no racing.

All competitors must wear the race shirt provided while racing.



Important Information – Race Registration

Team captains/steerers are to sign in their team before racing. They will confirm, division, canoe number and verify GPS tracking.



Race Day – Friday 01 March

Women's and Mixed team captain / steerers can sign in after 10AM

Sign in must be completed **prior to the Race Briefing.**

OC6 Men's teams, OC1/ OC2 paddlers can sign in once all Women and Mixed signed in.

Sign in must be completed **prior to the Race Briefing.**

Race Day – Saturday 02 March

Only Mixed team captain / steerers can sign in between 6.00 AM – 6.30 AM prior to the Welcome Ceremony.

We ask everyone to attend the Welcome Ceremony

Sign in must be completed **prior to the Race Briefing.**

Women will sign in after mixed race registration completed

Sign in must be completed **prior to the Race Briefing.**

Men will sign in after women race registration completed.

Sign in must be completed **prior to the Race Briefing.**



Vehicle Technologies GPS Tracking – On water Safety Friday, Saturday and Sunday Races



To assist with on water safety, Vehicle Technologies GPS Trackers will be assigned to each OCb Team and individual competitors racing small craft.

Each OCb steerer and OC1/2, V1 individual paddler will receive a waterproof tracker to carry on their person for their race and are required to turn and check the device is working with the Race Flotilla Team.

All trackers to be returned to Registration post race and no return will incur a fee of \$100.

Correct and complete setup will allow the Race Director to track all teams and individuals racing and notify authorities of their location in the event of an emergency. Thank you for doing your part.

All teams and individuals are required to be using Vehicle Technologies for the entire race to be eligible for medals and prizes inline with the event program terms and conditions for eligibility.





FRIDAY – Sydney Harbour Mini Challenge Program

To assist with on water safety, Vehicle Technologies trackers will provide GSP Tracking to the Race Director.

There is one race with three wave starts:

- OC6 Women & Mixed
- OC6 Men
- OC1 and OC2 competitors

Friday 01 March

	OC6, OC1 & OC2 Race 12 KMS
10:00 AM	Registration at Rose Bay
11:30 AM	Race Briefing - ALL Waves
12:00 PM	Race Start - W1 OC 6 Women & Mixed
12:10 PM	Race Start - W2 OC6 Men
12:20 PM	Race Start - W3 OC1 & OC2
2:30 PM	Friday Presentations



Race Details Friday Mini Harbour Challenge

One race only 12PM 3 waves each wave 10 mins apart.
Wave 1 Women and Mixed; Wave 2 Men; Wave 3 OC1/ OC2

Race Start Procedure for Friday Racing

All Canoes to stay on the beach until asked to move to prestart line;
The WHITE flag will indicate 2 mins to race start and to move to Prestart line and hold canoes.

Simultaneous drop of the WHITE flag & raise of RED flag will signal to move forward to the **start line** and to hold the canoe stationary at that point.
Do NOT cross your bow over the start line.

Simultaneous drop of the RED flag & raise of GREEN flag – signals the start of the race

Raising of a BLACK flag will indicate that during the start a canoe was clearly over the start line.

A 10 minute penalty will be imposed on the offending canoe showing disregard.

Depending on conditions and at the discretion of the Race Director, the time intervals between the flag sequence may be altered.

It is the responsibility of every team to conform to these rules. It is not mandatory that the Starter raise a black flag, or give a verbal warning to the team for a penalty to be upheld.

There will be camera positioned at the start line to monitor start of each race



Race Course Friday Mini Harbour Challenge

A cut of point /time will be enforced for slower canoes.
Please attend race briefings for cut of details and the latest updated information.

Tide Times:

Low Tide: 06:42am – 0.62m

High Tide: 12:38pm – 1.37m

Sunrise: 6:44am

Sunset: 19:30pm



Friday Mini Harbour Challenge Presentations



Presentations for Friday's Mini Harbour Challenge will be held on site at the Woollahra Sailing Club after the completion of races and results have been finalized.

At Saturday nights party and presentations there will be some spot prizes. So keep your wrist band on as this is your ticket for the prizes.

There are showers on site if you want to freshen up after paddling.

We encourage paddlers to Visit Club Rose Bay which is an RSL Club across from the Woollahra Sailing Club and is the venue for Saturday night Presentation and Party.

There will be vendors on site, including AO Merchandise and Bondi Club merchandise. Collect your pre-ordered merchandise from the merchandise tent.



SATURDAY – Sydney Harbour Challenge Program



To assist with on water safety, VP Tracks will provide GSP Tracking to the Race Director. Each OCb steerer will receive a waterproof tracker to carry on their person for their race.

Friday 01 March	
Approx. 12:30 PM	Pre Registration Open - @ Woollahra Sailing Club
Saturday 02 March	
6:00 AM	Registration Open
6:30 AM	Welcome to country & race blessing
7:15 AM	Briefing Mixed Race
7:45 AM	Start Mixed Race
10:15 AM	Briefing Womens Race
10:45 AM	Start Womens Race
1:15 PM	Briefing Mens Race
1:45 PM	Start Mens Race
Start: 6:30 PM	Saturday Presentations @ RSL Rose Bay
Saturday Night	10 Year sCelebration @ RSL Rose Bay





Race Details Saturday Sydney Harbour Challenge

Race 1 Mixed	No wave start.
Race 2 Women	Wave 1 All categories except Open Women Waves 10 Min apart Wave 2 All Open Women
Race 3 Men	Wave 1 All categories except Open Men Waves 10 Min apart Wave 2 All Open Men

Race Start Saturday Racing

All Canoes to stay on the beach until asked to move to prestart line;
The WHITE flag will indicate 2 mins to race start and to move to Prestart line and hold canoes.

Simultaneous drop of the WHITE flag & raise of RED flag will signal to move forward to the **start line** and to hold the canoe stationary at that point.
Do NOT cross your bow over the start line.

Simultaneous drop of the RED flag & raise of GREEN flag – signals the start of the race

Raising of a BLACK flag will indicate that during the start a canoe was clearly over the start line.

A 10 minute penalty will be imposed on the offending canoe showing disregard.

Depending on conditions and at the discretion of the Race Director, the time intervals between the flag sequence may be altered.

It is the responsibility of every team to conform to these rules. It is not mandatory that the Starter raise a black flag, or give a verbal warning to the team for a penalty to be upheld.

There will be camera positioned at the start line to monitor start of each race



SHC Race Course – Saturday 02 March 2024

Shark Island Light House will be the cut off marker for slower canoes who have not reached this point by 1hr 40 minutes from the start of the race. Please attend race briefings for further details and updated information



Tide Times:

Low: 09:08 – 0:15m

High: 14:51 – 1:22m

Low: 20:55 – 0:66m

Sunrise 06:44 am

Sunset 17:29 pm



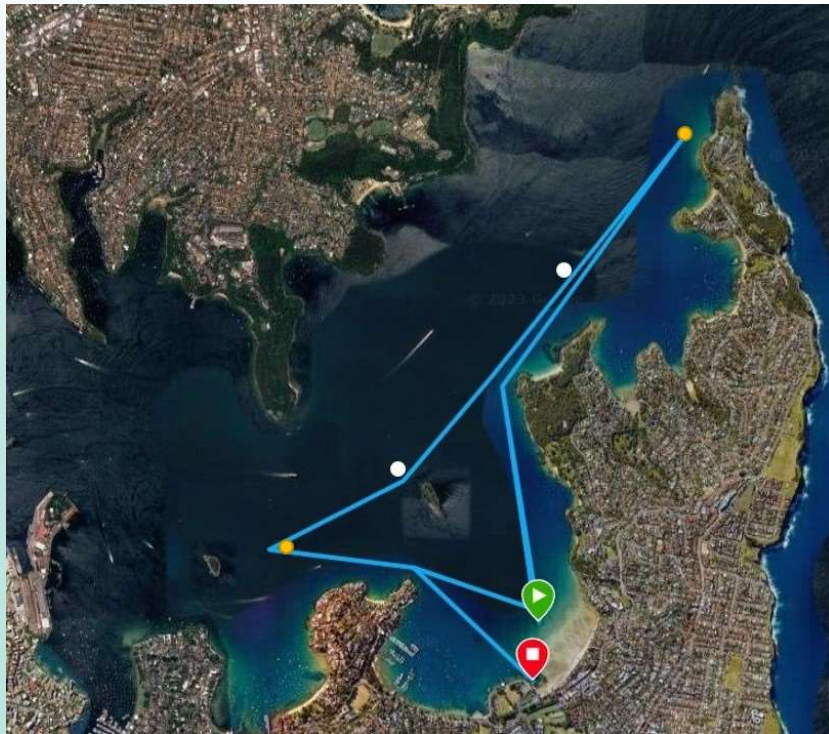
Finish line is Rose Bay Jetty and Buoy



SHC Alternate Race Course – Saturday 02 March 2024

A cut of point /time will be enforced for slower canoes.
Please attend race briefings for cut of details and the latest updated information.

- Two laps, and return to Rose Bay (finish) on second lap



Tide Times:

Low: 09:08 – 0:15m

High: 14:51 – 1:22m

Low: 20:55 – 0:66m

Sunrise 06:44 am

Sunset 17:29 pm



Finish line is Rose Bay Jetty and Buoy





Presentations / After Party / Celebrating 10 Years

JOIN JOIN US at the Woollahra Sailing Club

Presentations will start at 6:30 PM

Then its time to party to celebrate an awesome day of racing over a few drinks. The Venue has an amazing menu of food available downstairs at the Venue Restaurant

Everyone from AOCRA and Bondi OCC thankyou all for attending and we hope you have an amazing time



DRINK RESPONSIBLY



Over \$12,000 IN PRIZE MONEY & SPOT PRIZES

Prize Money will be awarded for the Saturday races where the following criteria is met:

- Minimum of 5 teams per age category in each race
- No prize money for unlimited canoes
- Spot Prizes on the night and require your wristband on your wrist to claim your prize in person.



Sydney Harbour Challenge Parking Procedures Lyne Park Rose Bay

Canoe Trailer Parking Directions



CANOE TRAILER DRIVERS PLEASE CALL AHEAD TO CONFIRM YOUR ARRIVAL to Adam Rakowski on Mobile: 0402 320 797

Directions:

1. Drive along New South Rd turn left at the lights into the parking area near Rose Bay Boat Ramp
2. Google Map directions Rose Bay Boat Ramp: <https://goo.gl/maps/PHoogjvgupZZYRtB9>
3. Drive in the one way direction up past the cafe JEZ' VE to the ferry wharf
4. You will see parking officials directing you in along the driveway near the Catalina restaurant into LYNE Park
5. Once on the park the Parking Manager (WEZ Mob. 0406 492 423) will direct you to your spot where you will be reversed in place.
6. Remove canoes and once rigged they are best left on the hill area which will be marked.
7. DONT leave canoes on the Rose Bay beach Friday night as the high tide may wash them away.
 1. Saturday morning all canoes can be trolleyed along the footpath waterside to the ramp and placed high on water line for the days racing.
8. Trailers once loaded after the race can be placed in the parking station near the Jez-Ve cafe or towed off the grass area by 9am Sunday morning.
9. There is overnight trailer parking Saturday night on O' Sullivan Rd & Newcastle St adjacent to with side of the Golf Course marked on this map



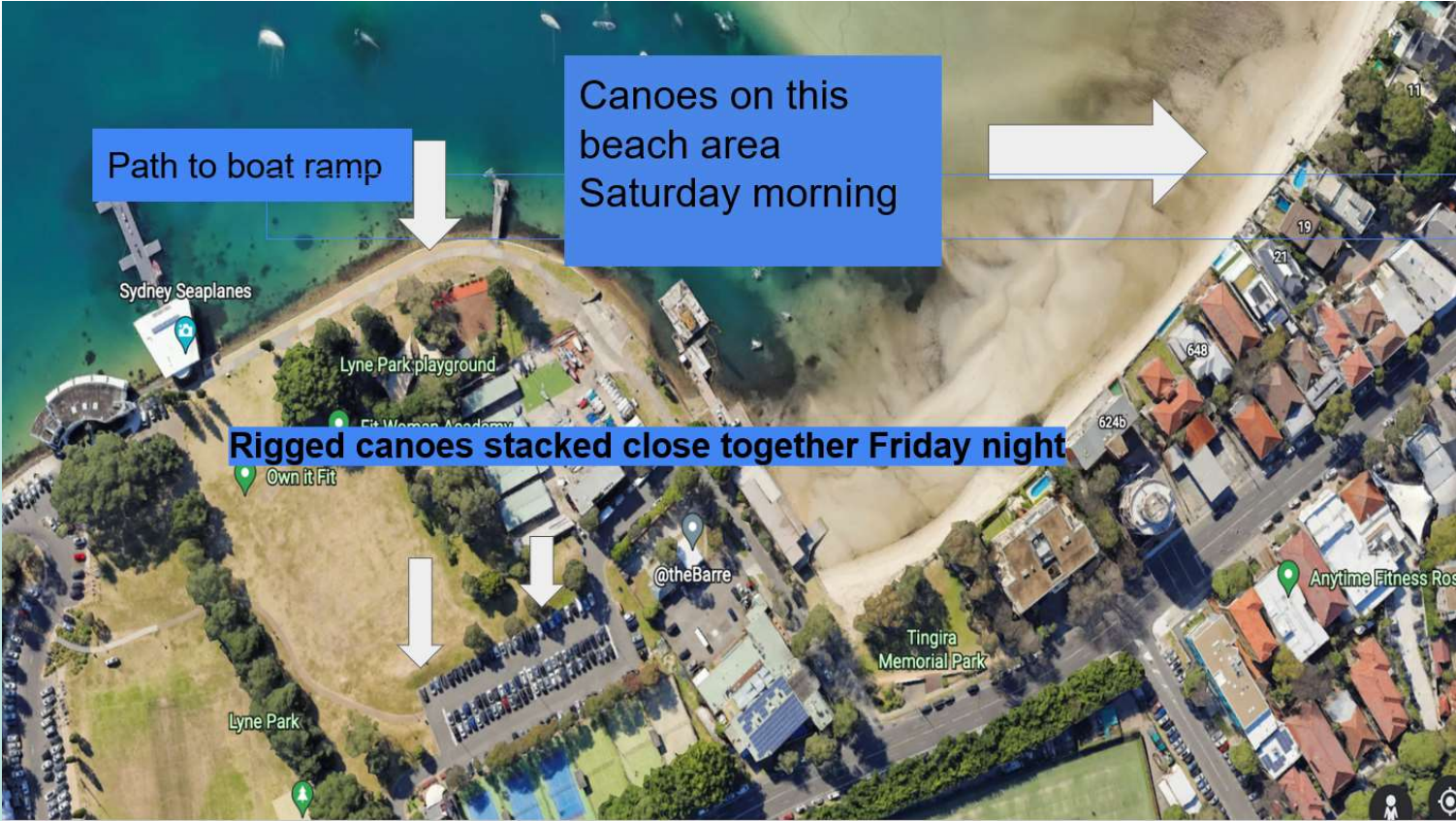
Sydney Harbour Challenge Parking Procedures Lyne Park Rose Bay



Sydney Harbour Challenge Parking Procedures Lyne Park Rose Bay



Sydney Harbour Challenge Parking Procedures Lyne Park Rose Bay

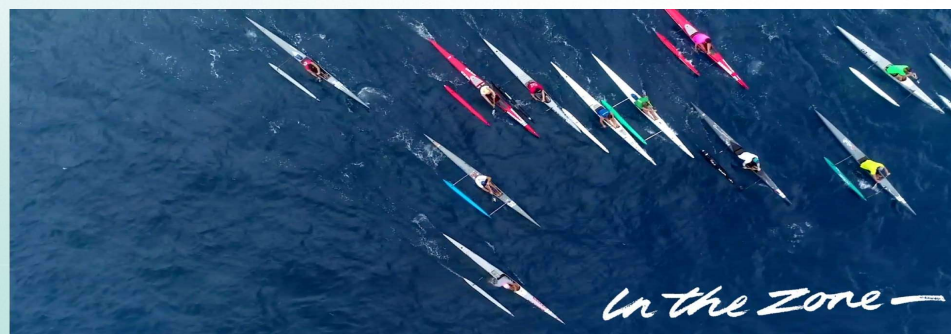


Sydney Harbour Challenge Parking Procedures Lyne Park Rose Bay





Kurnell OCC
hosting the
Ozone R3 Kurnell Cup Downwinder



Final Race in the 2023-24 Series

Date: Sunday 3 March 2024





Welcome from Kurnell Outrigger Canoe Club

On behalf of the members of Kurnell Outrigger Canoe Club (KOCC) it will be an honour to host the third and final race in the 2023 Downwind Series.

We would like to welcome you back to Kurnell for this annual downwinder event.

Outrigger Canoeing in Southern Sydney is synonymous with the Kurnell downwinder route, with the regular North Easterly Winds and swell across Bate Bay to the Port Hacking River located in the traditional Aboriginal lands of the Dharawal people. The downwinder also works very well in reverse, if the winds blow from the south on the day.

The Kurnell downwinder route has been a rite of passage for paddlers from the area and we are eager to show off our coastline and “bumps” to all competitors.

It is a pleasant drive from Rose Bay to the Kurnell Start Line to setup OCb, OC1/2, V1 outriggers and Ski' s for a second day of ocean racing.

All conditions will be covered at this event you will enjoy the race!!!

Kurnell Outriggers are excited to show off it' s breathtaking backyard to all local, interstate and international paddlers. May you all have a safe and enjoyable race.

Tanya Sauer – Secretary KOCC



Colin Olive & Tanya Sauer - Olive
Founders of KOCC





Race Rules and Safety



- Those wishing to compete in this race must be experienced enough to handle the conditions and to acknowledge that there is a significant part of the course where you are unable to paddle to shore.

There are several Risks and Safety considerations that paddlers need to be aware of:

- Wharf Kurnell – Paddlers are required to keep 100 meters away from this wharf and outside of the new wharf structure where the yellow buoys are placed.
- There is a ferry that runs between Cronulla Wharf (Gunnamatta Bay) and Bundeena that paddlers need to be aware of and give way to.

Paddlers/teams must adhere to the following so start numbers for each race can be determined.

OC1/2/ V1/Skis paddlers

- All paddlers must sign on at the registration desk **prior to their race and confirm division and canoe number** before entering the beach marshalling area.
 - All Paddlers must enter the beach through the marshalling area (the scrutineers will mark you and your craft off as race compliant)
 - Paddlers who fail to enter the beach via the marshalling area will be issued a DNS result.
- Support Boats are there to ensure your safety. All paddlers **MUST** follow Race Director and support boat officials directives.

Core Safety Team

- First aid volunteers will be both on the water with the safety boats and at the start and finish lines
- There will be a designated first aid area at the finish.
- The race Director will be land based and will be in contact with the assistant race director(s) that will be on the water and at the start lines.
- **All paddlers are expected to follow the AOCRA race rules and the directions of the Race Director(s) and support boat officials at all times. or they may be disqualified as a result.**





Vehicle Technologies GPS Trackers



To assist with on water safety, Vehicle Technologies GPS Trackers will be assigned to each OCb Team and individual competitors racing small craft.

Each individual paddler will receive a waterproof tracker to carry on their person per canoe for their race and are required to turn and check the device is working with the Race Flotilla Team.

All trackers to be returned to Registration post race and no return will incur a fee of \$100.

Correct and complete setup will allow the Race Director to track all individuals racing and notify authorities of their location in the event of an emergency. Thank you for doing your part.

All individuals are required to be using Vehicle Technologies for the entire race to be eligible for medals and prizes inline with the event program terms and conditions for eligibility.





Schedule of Events



Please note times are approximate and we ask paddlers be ready prior to times indicated. Event Times and Courses may be altered at discretion of Race Director to give the best race conditions for competitors. These announcements will be shared on [AOCRA | Facebook](#) and Kurnell Outrigger Canoe Club's Facebook.

Schedule of Events Sunday 3 rd March				
EVENT	TIME	LOCATION	WHO	Wave Starts
Registration	8:00 am	Kurnell	All Paddlers	Kurnell Silver Beach grassed area under tent in front of Café K
Competitors Briefing – all classes	10:00 am	Kurnell	All Paddlers	Kurnell Silver Beach in front of Registration area.
Marshalling and safety gear checks	11:30 pm	Silver Beach Kurnell	Long Course Paddlers	Kurnell Silver Beach on beach in front of Café K
Long Course Start (incl. Skis and OCb)	12:30 pm	Silver Beach Kurnell	Long Course Paddlers	Wave 1 OCb Wave 2: Women OC1/2 & All V1. Golden and Platinum Men Wave 3: Men OC1/2 & Women Ocean ski Wave 4: Men Ocean ski
Presentation and party	3.00 – 5:00 pm	Kurnell Sports and Recreation Club, Kurnell	All Paddlers welcome there is food, drinks and a band.	160 Captain Cook Drive, Kurnell Phone: 9668 9259





Race 1: Long Course Downwinder 20km Course

The long course race will begin from the Eastern side of the Kurnell Oil refinery Jetty on Silver Beach in front of Café K and following Cape Solander.

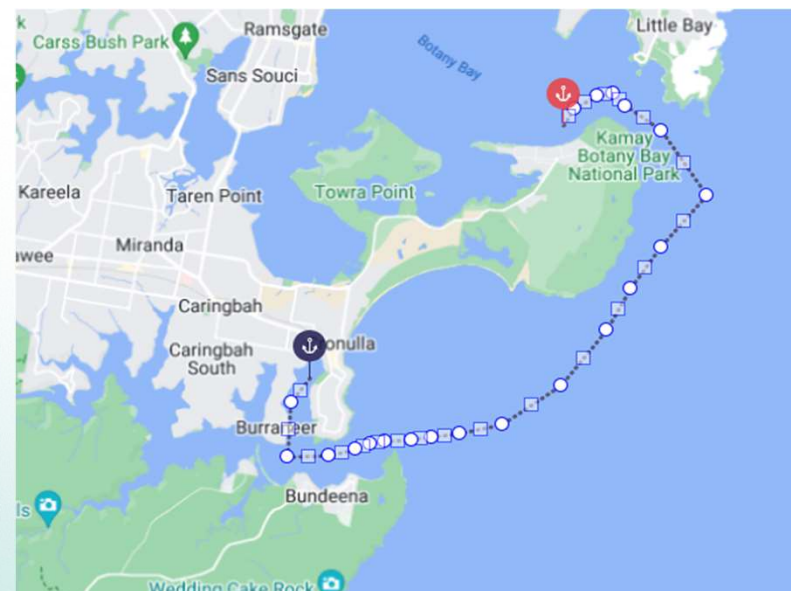
The canoes will follow the coast line East around a turning buoy and then head South past Cape Solander (this 6 km stretch is the hardest out of the whole course), where following the Cronulla beaches in Bate Bay in a South Westerly direction to Bass & Flinders Point, where canoes will do a non ama turn on the channel marker heading West through the mouth of the Port Hacking River, following the channel markers until Gunnamatta Bay, where the canoes will make a non ama turn on the channel marker at the beginning of the bay, and a sprint to the Finish off the Gunnamatta Pavilion Baths.

In the circumstances where the wind is a Southerly, the race course shall be run in reverse.

Tide Times:

Low: 9:56 AM – 0.70M
High: 14:21 PM – 1.15M

Sunrise 6:45 AM
Sunset 7:29 PM

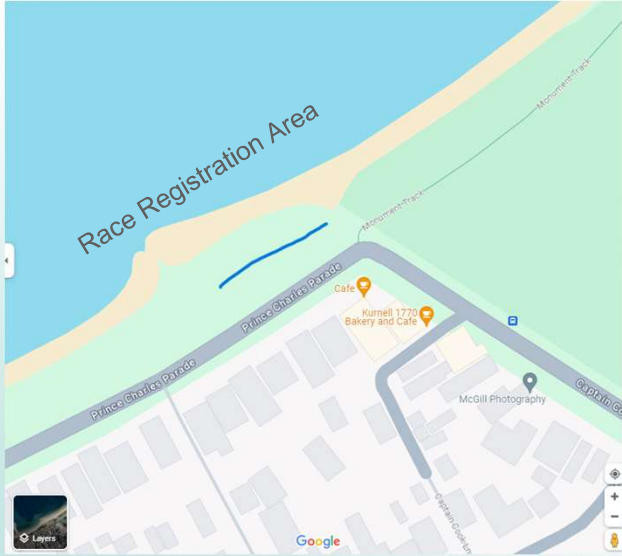
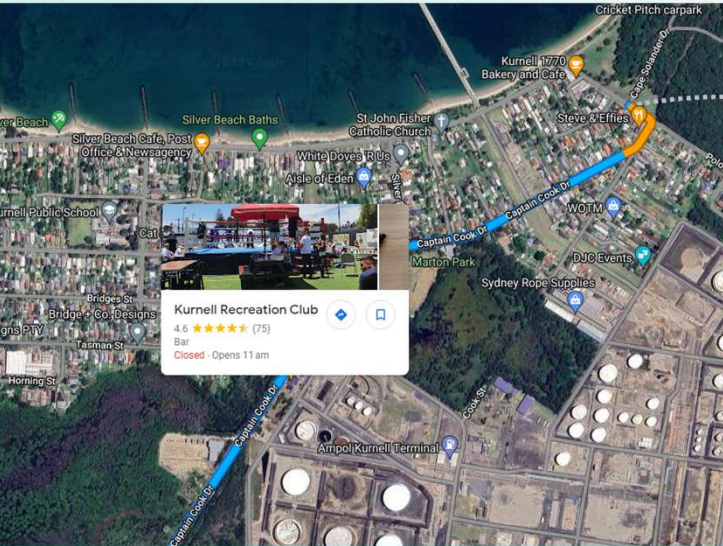




Long Course start location at Kamay National Park end of Silver Beach, Kurnell, parking, rigging and marshalling.



There is plenty of parking close to the Marshalling area on Prince Charles Parade, and there are public toilets nearby. Please note that trailer parking is at Bonna Point boat ramp end of Silver beach we suggest paddling your canoes up to the start area and registering to race. Paddlers are welcome to leave all non paddling gear at Kurnell Sports and Recreation Club. Presentation will be held there. Race Registration will be held on the greased area where the blue line is in front of Café K corner of Prince Charles Parade and Captain Cook Drive near the National Park. There is parking all along Prince Charles Parade and in the National Park.



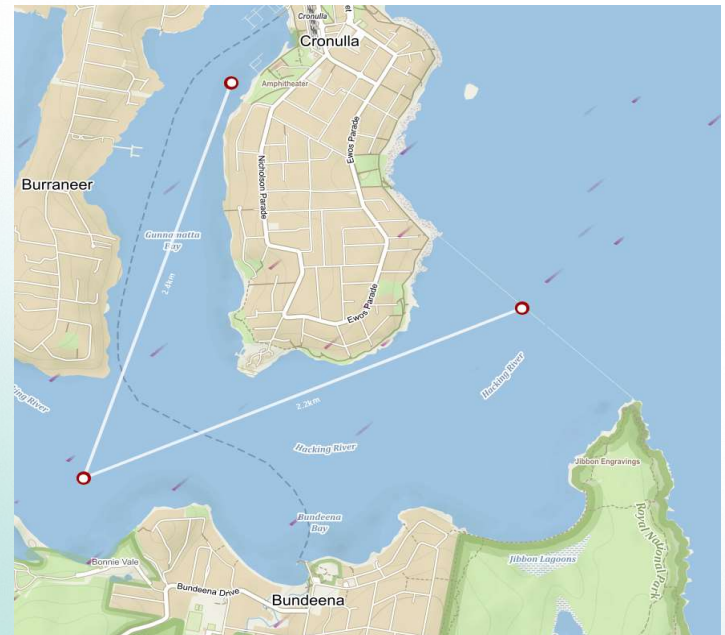
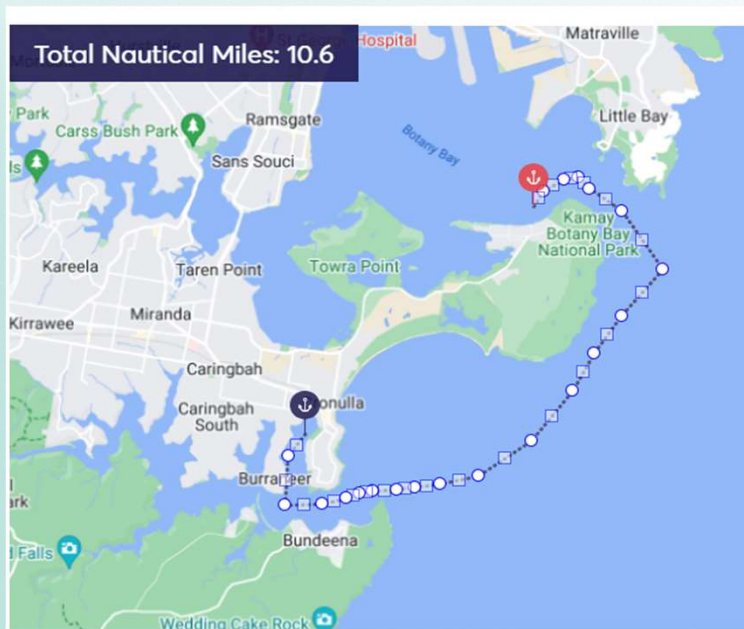


Long Course race details and navigation



Paddlers should note that the cliffs of Cape Solander (Kurnell) for the first 6 kms are unable to be scaled/accessed from water, and that swell can be generated from waves crashing against these cliffs. A buoy shall be dropped off East off the Southern Head to assist with the best lines and to take paddlers away from the cliffs somewhat.

Once outside the heads, you will not be able to reach land until the Southern end of Cape Solander, at Boat Harbour. From this point there should be a good downwind section right up until the mouth of the Port Hacking River, where you shall traverse on the non-ama side of a buoy at Bass & Flinders Point, hug the Northern Shoreline and turn once past the green channel marker at Gunnamatta Bay.





2023 - 24 Ozone Downwind Series Presentations

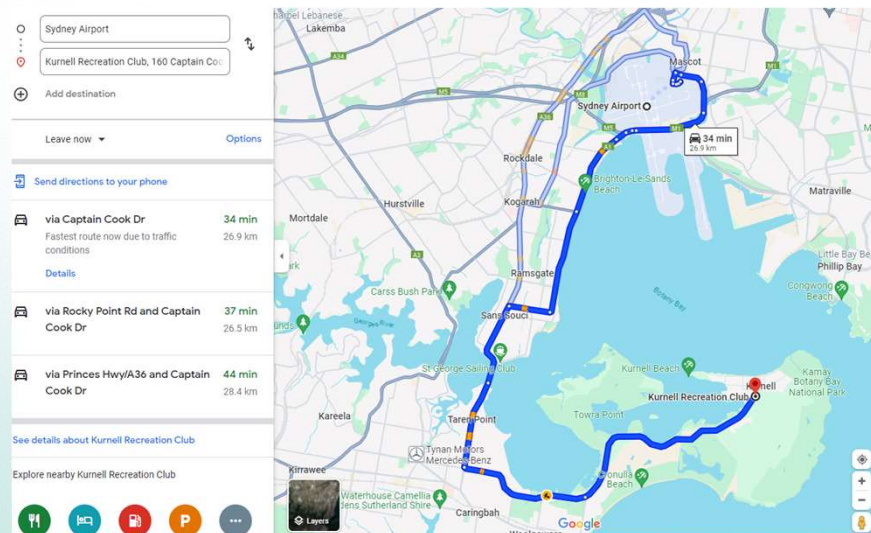


<https://www.kurnellrecclub.com.au/>

The Reccas

160 Captain Cook Drive, Kurnell, 2231

From 3:00 PM food, drink Band



Thanks to our Sponsors:

Your support of the Sydney Harbour Challenge 2024 is greatly appreciated, and we wish all competitors a great day of ocean racing around the Sydney Harbour.

A special mention to:

Ozone Australia and Paddling Promotions for their ongoing generous support to our sport and downwinder events.

V Insurance our preferred partner of Australian Outrigger Canoe Racing Association (AOCRA) offering a tailored insurance program that caters to the unique needs of outrigger racing.

The Woollahra Sailing Club who have been fantastic supporter of Bondi Outrigger Club providing Support Boats, facilities and onsite canoe trailer parking.

