



CLUB TO CLUB



**HURRICANE SENIOR AND JUNIOR
REGATTA.
MAYLANDS TO EAST FREMANTLE**

Children's
Cancer
Institute



Introduction

Hurricane is opening the 2025/26 racing season with the return of the Club to Club. After 2 years of testing and working out the kinks, this event is now a points race contributing to the summer season points tally. Every paddler in a seat contributes to their club's total so get involved.

Come on up to the Swan River to test out your winter training with a choice of 2 senior races on the day. The 'whole hog' 21 kms from Perth outriggers in Maylands down to Hurricane home base or the 'half run' from the Narrows Bridge to Hurricane – 11km. As well as the 'Kids vs adults' 11km distance run with a change over at Point Walter.

All designed to be a bit of fun with some competition thrown in, let's wake up those winter muscles and get your bum in a seat. The field will be open to OC1, V1, OC2, SUP and OC6, which will be run as a mixed event. So if you can't field a full team grab a bum from another club and get out on that water.

This year all proceeds from this event will be donated to the Children's Cancer Institute, including race fees and post event fundraising. So stick around after for the WAZA AGM, sausage in a bun and some raffle fundraising.

Its going to be a jam packed day and we would love to see you all there to kick the season off with some fun. There's something for everyone in this event so get involved!

Race schedule

<u>Time</u>	<u>Event</u>	<u>Distance</u>
0800	Registrations Open at Maylands	
0830	Canoe scrutineering	
0845	Welcome and Race Briefing	
0900	Whole Hog start	21km
0930	Registrations, scrutineering of craft at Narrows bridge	
1000	Half run and Kids run start	11km/ 6km
1100	Kids vs Adults relay change over SUP Short course Start	5km
1200	Presentations and fundraising	

Race Notes

- * Both Senior Races and the junior race will be running congruently, with the half run starting an hour after the full run to have the field finishing at the same time.
- * Race times are a guide only and may be varied due to weather conditions and other unforeseen circumstances. Please ensure you check with race officials on the day and attend all race briefings for updates.
- * Please note that the half run race start will be dependent on how quickly the “Whole Hog” racers reach the Narrow Bridge, so be ready to race nice and early.
- * Single and double craft will be starting ahead of the OC6s. With start staggering to be announced at race brief.
- * Sup entry is available for all courses.
- * **There will be no crew changes at the Narrows this year.**

Race Categories

Whole Hog – 21km

- Mixed OC6 (Lightweight + Standard)
- OC1/ V1/ OC2 mixed

Half Run – 11km

- Mixed OC6 (Lightweight + Standard)
- OC1/ V1/ OC2 mixed

Kids VS Adults – 11km

- Mixed OC6 Standard

Paddlers Pool and Canoe loan

If you want to paddle and don't have a team please make contact. Post on the event page attached to WAZA Outriggers Facebook.

To make this event more accessible Hurricane paddling crew and Fremantle outriggers are making canoes available for loan. If getting your canoe to the event is holding you back message Tori on 0409965517

General Safety

Life Jackets

Must be **worn** by all paddlers on OC1, V1 and OC2 craft, with six to be available in each OC6.

Leg Leashes

Must be **worn** by all paddlers on OC1, V1 and by 1 paddler on OC2 craft.

Water Safety Requirements

A beach coordinator, first aiders will be within the start vicinity.

Tender craft with drivers and crews will also be tracking the races to assist paddlers that find themselves in any difficulties.

Paddlers Ability

Paddlers are reminded that adequate training for this race is recommended and that all paddlers must be familiar with 'huli' procedures and have an appropriate level of fitness.

Canoes and Equipment

All canoes to comply with AOCRA specifications. Canoes will be checked on the beach prior to the race briefing.

Please ensure your canoe has the following:

- Tow rope attached;
- Appropriate rigging;
- Spare paddle (s);
- At least two (2) bailers attached in OC6;
- With one (1) bailer for a V1;
- Spray covers (if necessary);
- Positive buoyancy device;

Race Specifics Rules

The regatta will be run under AOCRA Regatta & Training Rules [AOCRA RULES](#)

Race times may change at the discretion of the race director and/or shipping movements, weather/ water conditions dictate a necessary rescheduling.

All Clubs and individuals must register online at www.aocra.com.au no later than seven (7) days prior to the event (**13th September 2024**). **LATE FEES WILL APPLY** don't make maniacs out of us 😊

To compete all paddlers must be current financial AOCRA and CLUB members.

Starts

Competitors must be present at the start line for their event as shown on the program. Starting signals shall be given regardless of absentees.

Entry Fees

Per senior paddler for each event raced	\$20.00
Per Junior Paddler for each event raced	\$10.00
SUP registration	\$10.00

Entries and payment are to be completed online via the AOCRA website.

SUP registrations Link to be made available.

Start location Parking – Full course

Maylands Public Boat ramp will be the launch point and race briefing site.

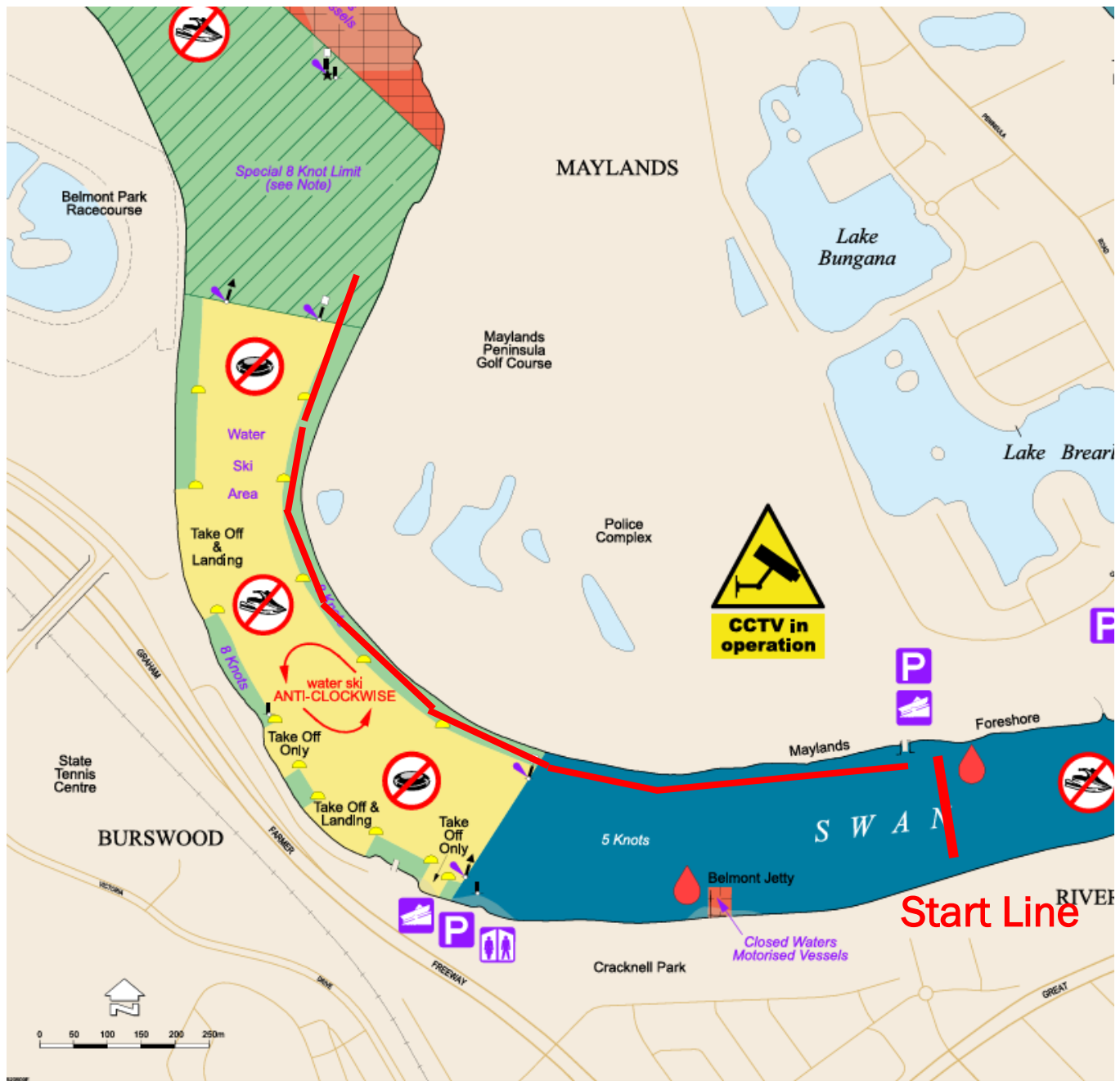
Parking also available at Perth outriggers



Caution ski area

Please keep to the right of the river, within the 8knot area to avoid the water ski area.

Give way to all water ski craft



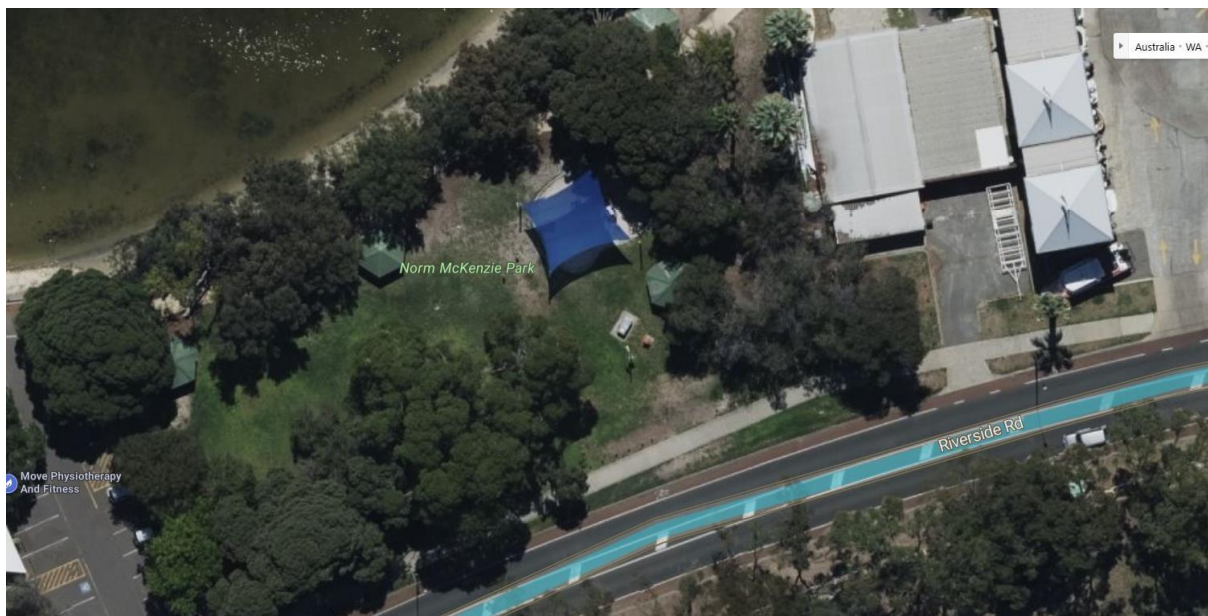
Start Location and Parking – Half course

Parking and launch facilities available at South Perth Boatramp Carpark.



Finish Location and Trailer Parking

Norm McKenzie Park will be available for trailer parking at the finish Line



Parking at Hurricane

Verge parking available within signed area.



Senior Regatta Course Maps

Long Course Start

Long course start line will be in line with the Maylands Public Boat ramp



Full course running along the right hand side of the channel obeying water craft road rules. To be advised at race brief.



Short Course Start

Short Course Start Line on the East side of the Narrows

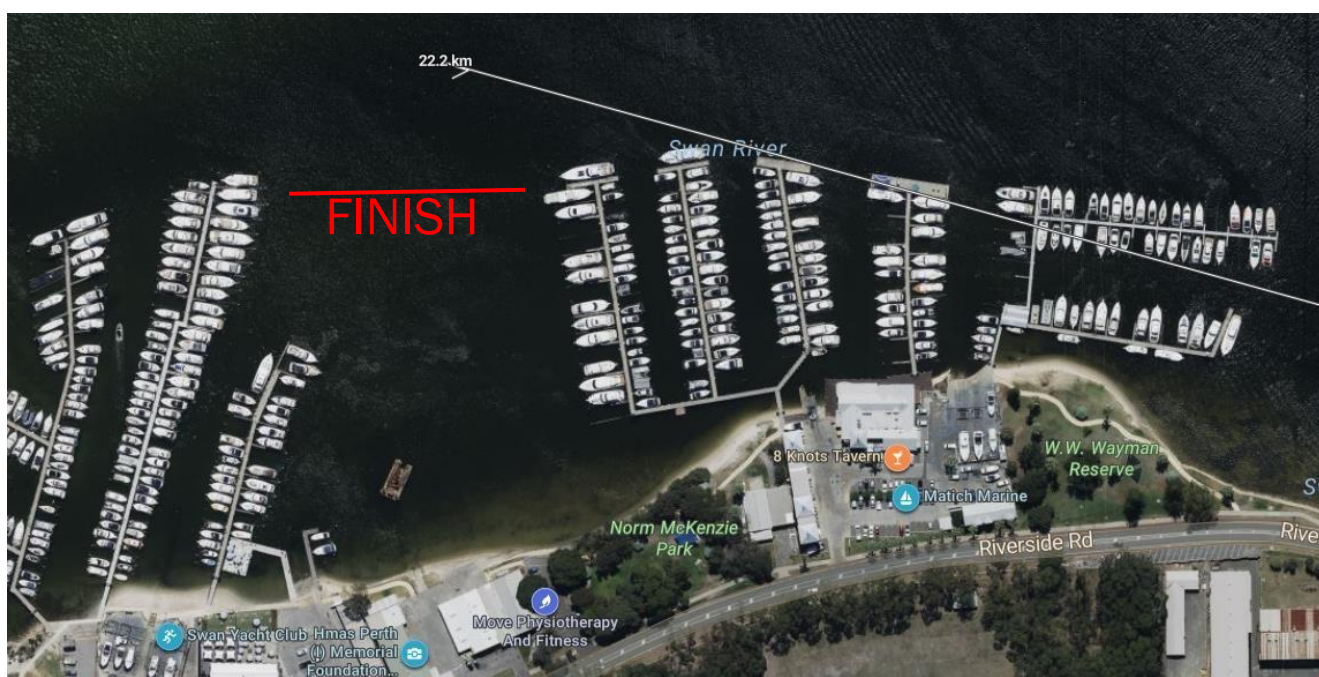


Short Course



All Courses Finish Line

All courses finish in line with the marina at Aquarama East Fremantle



Junior Regatta Course Maps

Kids vs Adults Leg 1

