



**Australian Outrigger Canoe Racing Association
In Association with Pacifica Outrigger Canoe Club**



**INVITES YOU TO THE
Hawaiian Airlines
Sydney Harbour Challenge
REGATTA 2015**

**Saturday 28th Feb 2015 and 1st March 2015
Registration, Start and Finish
Manly Wharf
Manly**

**Trailer Unloading & loading
Manly Esplanade East Then Trailers will go to
N Fort Rd, Manly
Behind Montessori School North Head
See map included**



Event Schedule

Friday 27th Feb 2015

4.00pm -7.00pm

Registration open Manly Wharf

4.00pm

Welcome to Country Ceremony

6.00pm

Hawaiian Airlines Serenaders at Manly food festival Hawaiian Theme

Saturday 28th Feb 2015

Registration Open	6.00am
Safety Boat Briefing	6.00am
Mixed Briefing	7.15am
Blessing of the Canoe and race	7.30am
Mixed Race Start	8.00am
Women's Race Briefing	10.30am
Women's Race start	11.00am
Men's Race Briefing	1.30pm
Men's Race Start	2.00pm
Hawaiian Serenaders to Play	4.30pm
Race Presentation for all divisions'	6.00pm

Sunday 1st March

NAISH NISCO Stand Up Board Racing (Boards Supplied)

\$25 per person for 2 races

Stand Up Briefing 1km race around Manly Cove

7.00am

Race start

7.30am

Heats of 30 people per heat (depending on entries)

1km Race final top 5 finishes from each heat to final

9.00am

V3 racing Men's and Women's open and Masters

10.00am

NAISH Stand Up Racing 200metre sprint races

11.00am

Round robin heats and a final

Prizes and medals for Sunday races



RACE INFORMATION

Mandatory for all Races

All OC6 canoes must have storm covers, 6 life jackets, 2 bailers, 25m tow rope and a spare paddle.

OC6 Long Course – Blue Line on Map

Competitor's will start in the water between Manly Wharf and the sea life aquarium, on the right hand side of the wharf looking out following the western shore of Sydney foreshores passing Sunrise beach, Bradley's Head , Taronga Zoo, Sydney Opera House and then Under the Sydney Harbour Bridge to a marker buoy off Blues Point and back Taronga Zoo, along the western foreshore and back to Manly Wharf, finishing between the wharf and the Sea life aquarium. The categories of the event will include open men's and women's ,open mixed, master mixed master men's, master women's,

All Club crews competing will be eligible for National Series points as this race forms part of the OC6 National point score series.

FULL DETAILS AVAILABLE ON RACE DAY. COURSE WILL BE SUBJECT TO CONDITIONS ON THE DAY. IT WILL BE ADJUSTED TO ENSURE THE BEST POSSIBLE RACE CONDITIONS

Queries and Contact

Queries should be directed to:

Sam Williams (Race Director) 0415769218 sam@jamiesonparkpaddle.com.au

Mike Mills-Thom (Race Director) on 0415769218 mikemillsthom@gmail.com

Mark Forbes (AOCRA President all other enquires)

Amenities





Male/female toilets are provided at Western end of Manly Promenade next to Sea life aquarium, under Manly Wharf , at the stairs leading down to car park under wharf.

Safety

Members of the zone committee & AOCRA will be performing safety inspections on all canoes. If a canoe fails to meet the required AOCRA Safety guidelines, the canoe will be ineligible to take part in the event.

Rough Seas

In the event of rough seas, all courses will be running in the opposite direction to Roseville Bridge and return

Parking

There is car parking available in Manly , it is car parking stations so you can not have singles on your cars

The parking ticket machines take \$1 and \$2 coins so please bring change. A Credit Card payment option is available on some machines..

Boat Trailer Parking Unloading / Loading/ Rigging The East Esplanade , see map attached

There will be designated areas for trailer parking, unloading, loading and rigging opens from 9am Friday and car park attendance will give you directions. Trailer drivers please arrive as early as possible to avoid congestion.

Trailer parking will be behind the Montessori School at North head, see map attached. Trailer parking entry times are limited, Please liaise with event director Sam Williams on 0415769218 for times



CONDITIONS OF ELIGIBILITY

1. Only a competitor who is a financial member of a club affiliated with AOCRA Inc. and is a current registered competitor with AOCRA Inc. is eligible to nominate and compete in any event.
2. AOCRA Inc., the Race Directors, Mike Mills-Thom, Sam Williams or Mark Forbes AOCRA President, reserves the right to request proof of identity or age (i.e. identification card with photograph) of a competitor at any time.
3. For Mixed Crew events, a minimum of 3 women paddlers must be in the crew to constitute a mixed team.
4. The Race Committee reserves the right to the arbiter in any dispute regarding eligibility and registration of competitors.
5. The Regatta Rules on AOCRA website www.aocra.com.au of the Australian Outrigger Canoe Racing Association Incorporated shall apply to all New South Wales regatta races.
6. All crews must start the race with 6 paddlers and finish with 6 paddlers.
7. Composite teams can enter but will NOT be eligible for prize money. These teams will be eligible for trophies.

AGE DIVISIONS

Age Divisions for All Competitors

The following age divisions shall apply to this OC6 event, based on calendar year of competition:

	Adult Age Divisions	Women's Age	Men's Age
ii.	Open	Adult age i.e. 20 yrs and above	
iii.	Masters	40 yrs and above	40 yrs and above
iv.	Senior Masters	50 yrs and above	50 yrs and above
v.	Golden Masters	60 yrs and above	60 yrs and above
vi.	Platinum Masters	70 yrs and above	70 yrs and above

Note: there must be three (3) teams to make a division.



RACE FEES

Seniors:

OC6 = \$480 per team/canoe (equivalent to \$80.00 per paddler and sponsors race shirts are provided)

OC6 CANOE RENTAL \$200 PER RACE

Race fees must be paid **ON LINE** by **Direct Debit or Credit Card**.

INTERNATIONAL PADDLERS must sign a waiver form and have their own travel insurance.

Prize Money: There will be HAWAIIAN AIR tickets for first in the following divisions: Open Men's , Open Women's, Tickets will be ticketed in the names of the participants in the canoe for Molokai, The other three names for men's and four names for women's must be supplied within 45 days of the event.

Merchandise will be available for sale

Hawaiian Airlines, Catfish, Kialoa Paddles, Naish,

Prize Money & Airline tickets for international or Australian club teams only

Open Mixed \$1600, Master Men's, Master women's, Master Mixed \$1100, Senior Master Men's , Senior Master Women's, Senior Master Mixed \$900, Golden Master Men's, Golden Master Women's, Golden Master Mixed, \$700. There must be three to constitute the class to be eligible for prize money. At the race directors discretion.

Towing Assistance

To be eligible for towing assistance you must bring a full trailer (of 6 man outrigger canoes) and loan out all spare canoes that are not used for the races your club is not racing in. All loan canoe clubs will be paid the \$200 per canoe per race that it is used. If you club is from outside the Sydney metropolitan area you are entitled to the following extra assistance for towing:

60 cents per kilometer if you have a full trailer

50 cents per kilometer if you have 5 canoes on your trailer

40 cents per kilometer if you have 4 canoes on your trailer

30 cents per kilometer if you have 2 canoes on your trailer

If you do not loan canoes you are not entitled to towing assistance

Please let either Mike or Sam know as soon as possible on how many loan canoe you have and for what races.



UNLOADING

NOTE

When your trailers arrive on the Friday we will have event staff to unload and help you rig, Please come as early as you can Friday even if your team is not available until late, Limited unloading of trailers SATURDAY

CLUB AND TEAM NOMINATIONS

14th February 2014

Canoe Rental closes on this DATE, no more canoes will be loaned if entries are after this date , we need reasonable time to organize rental canoes.



21st February 2014

By This this date, your club must have lodged a Club Nomination online at www.aocra.com.au

A Club Team/Competitor Nomination form must be completed online at www.aocra.com.au .



Sunday Racing Race Fees

V3 racing \$30 per person

Stand Up Paddleboard Racing \$25 per person

Entries on the day are OK





Manly Cove
Naish N1SCO Stand Up Racing
Sunday 1 March 2015 **1km Race**
7am briefing **200m Sprint**



\$25 per person
(boards supplied)

Proudly Supported By:

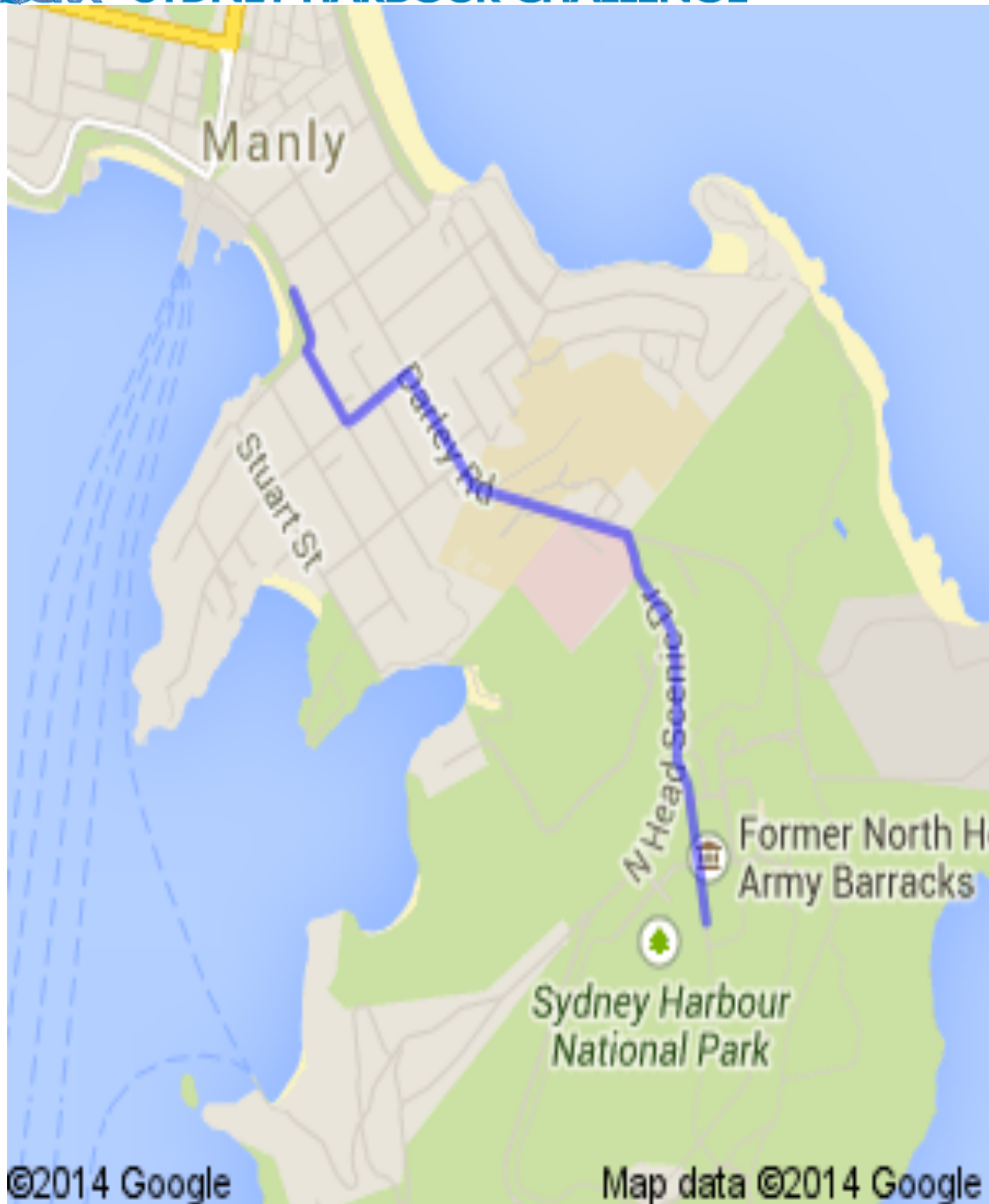


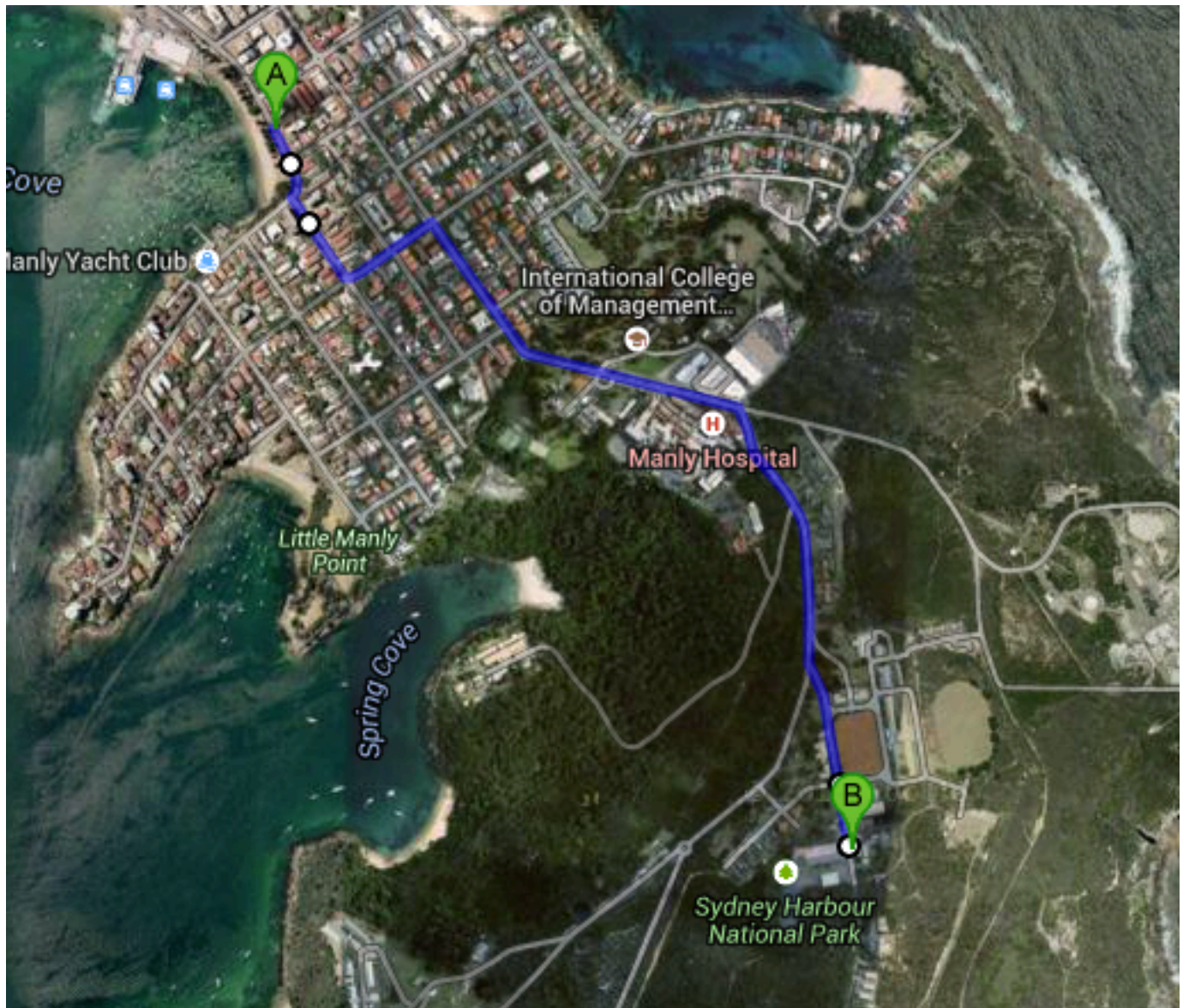
MAPS

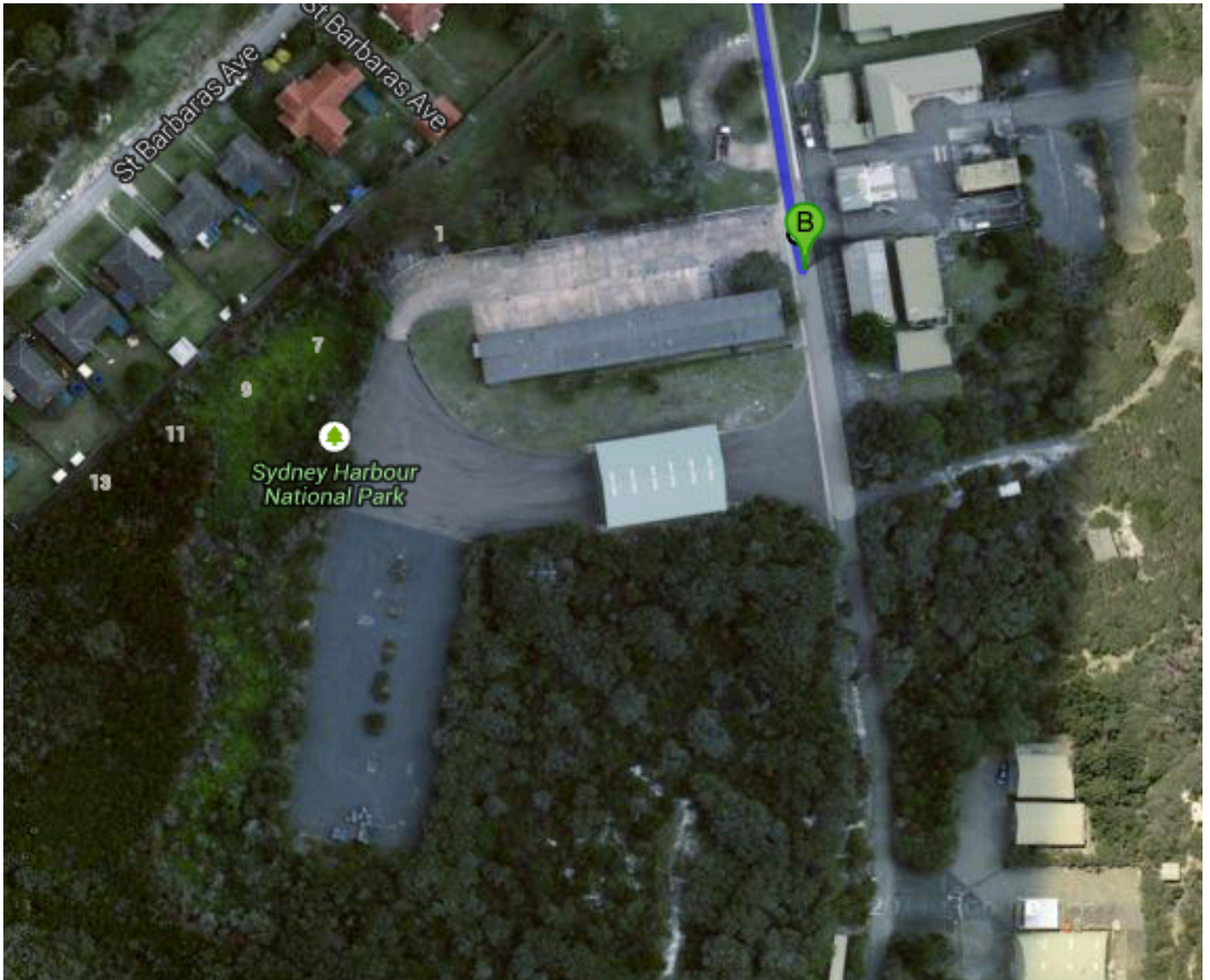
TRAILER PARKING

TRAILERS WILL BE UNLOADED OFF THE EAST ESPLANADE ONTO THE GRASS AREA

1. Head southeast on E Esplanade toward Ashburner St 130 m
2. Take the 2nd left onto Osborne Rd 170 m
3. At the roundabout, take the 1st exit onto Addison Rd 180 m
4. Turn right onto Darley Rd 650 m
5. Turn right onto N Head Scenic Dr 500 m
6. Slight left onto N Fort Rd 350 m
7. Turn Right in front of Montessori School
PARK TRAILER IN AREA BEHIND SCHOOL







PLEASE RIG ON THE EASTERN FORESHORE RESERVE, OFF EAST ESPLANADE MANLY ONCE THE CANOES ARE RIGGED PLEASE PROCEED AROUND TO THE WESTERN SIDE OF MANLY WHARF

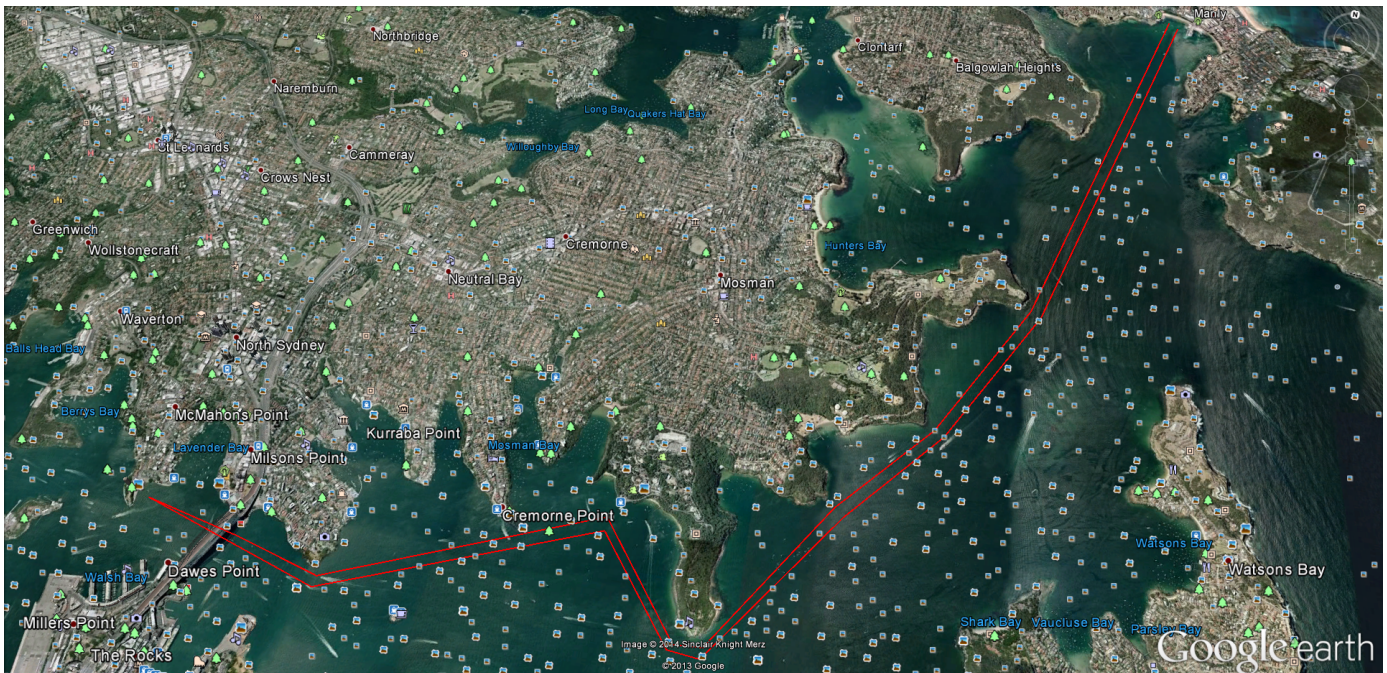




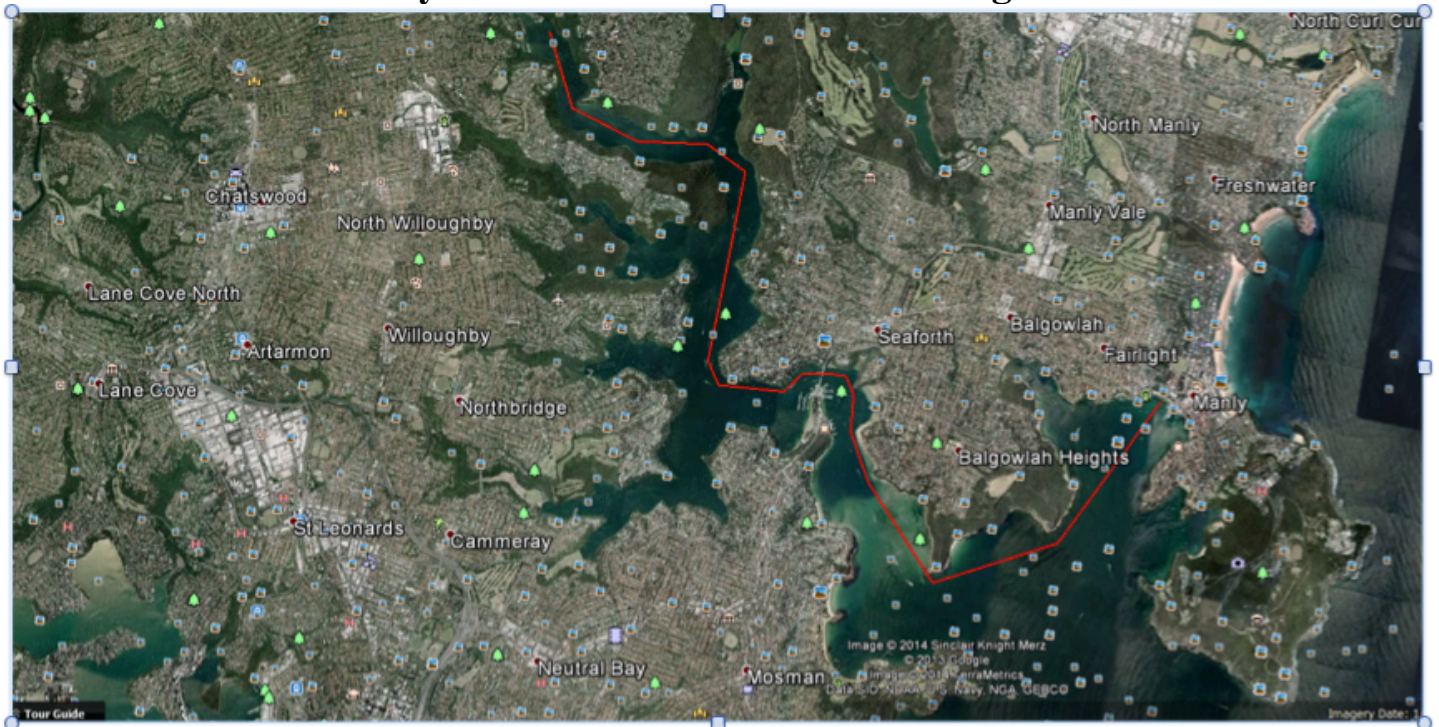
Race Course

Competitor's will start in the water between Manly Wharf and the sea life aquarium, on the right hand side of the wharf looking out following the western shore of Sydney foreshores passing Sunrise beach, Bradley's Head , Taronga Zoo, Sydney Opera House and then Under the Sydney Harbour Bridge to a marker buoy off Blues Point and back Taronga Zoo, along the western foreshore and back to Manly Wharf, finishing between the wharf and the Sea life aquarium.

Race Course From Manly



Alternate Course
If extremely bad weather to Roseville Bridge and Back



The Venue

The main headquarters for the event will be on the right hand side of the wharf looking out from the beach.





Sydney Harbour Challenge Supported by





Vaikobi

