

The following directions is to help navigate BoM to find where the wind warnings are located.

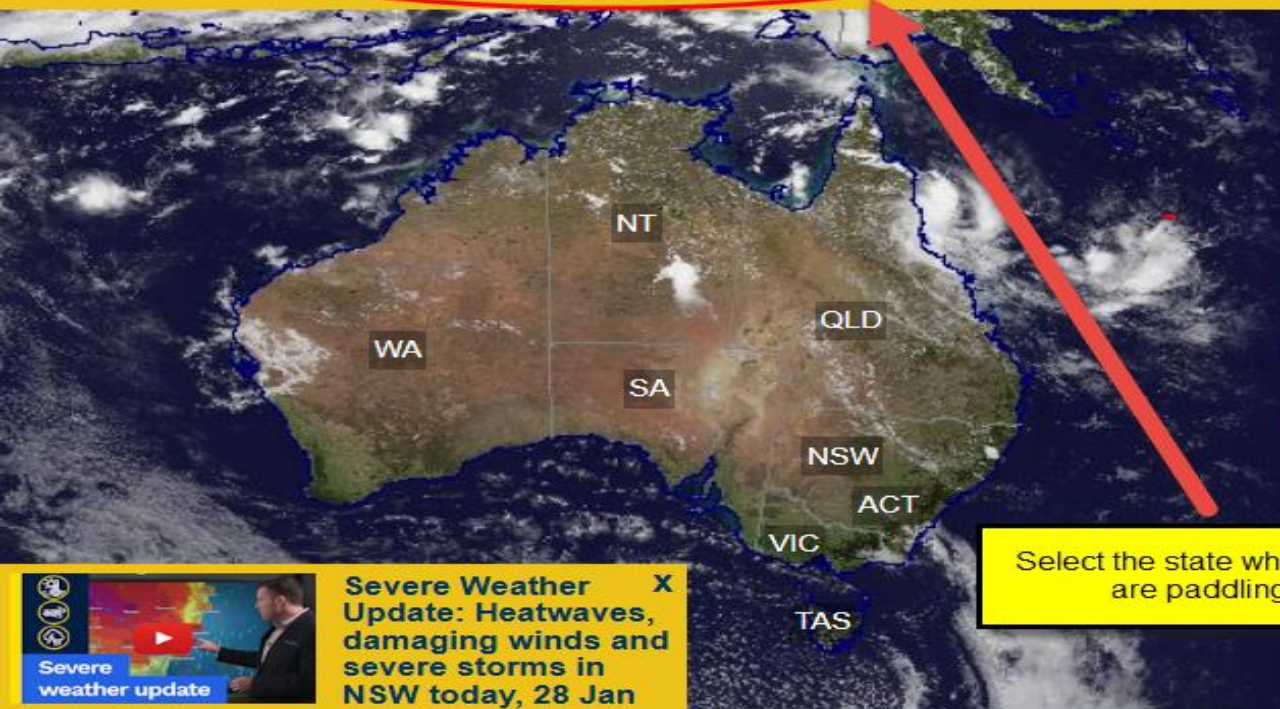
[Australia's official weather forecasts & weather radar - Bureau of Meteorology](#)



Warnings current

NSW | VIC | QLD | WA | SA | TAS | ACT | NT

Warning services



> Rain radars

> Satellite images

> Weather maps

> MetEye



Australian
Weather
Calendar
2025

Buy now



Advertisement

Severe Weather Update: Heatwaves, damaging winds and severe storms in NSW today, 28 Jan

Weather for Tuesday 28 January

City observations



Sydney

Now

30.5°

ESE 30km/h

Max 40°

Afternoon cool

Melbourne

Now

22.4°

SSE 17km/h

Max 22°

Partly cloudy

Brisbane

Now

30.6°

ENE 7km/h

Max 32°

Mostly sunny

Perth

Now

31.8°

SE 13km/h

Max 37°

Sunny

Adelaide

Now

25.5°

W 24km/h

Max 27°

Becoming sunny

Hobart

Now

19.8°

SW 37km/h

Max 20°

Partly cloudy

Canberra

Now

35.5°

NW 37km/h

Max 37°

Afternoon cool

Darwin

Now

33.1°

WNW 20km/h

Max 33°

Shower or two

[Bureau Home](#) > [Australia](#) > [New South Wales](#) > **New South Wales Warnings Summary**

New South Wales Warnings Summary

This page provides a summary of the valid weather warnings issued in this state.

This page automatically refreshes whenever a warning is issued. Click on the warning link for more information.

 [About Warning Services](#)

Warnings current:

- [Marine Wind Warning Summary for New South Wales,](#)
- [Heatwave Warning \(NSW\),](#)
- [Severe Weather Warning for parts of Metropolitan, Hunter and Illawarra Forecast Districts.](#)

[Tropical Cyclone Warnings and Information](#)

Warnings Information

- ▶ [Total Fire Ban and Current Fire Danger Map](#)
- ▶ [Tropical Cyclone Warnings and Information](#)
- ▶ [Wind Warnings Definitions](#)

Click on Marine Wind
Warning Summary

WARNINGS

[WATER](#) | [CLIMATE](#)

[Tropical Cyclones](#)

[Tsunami Warning Centre](#)

[Agriculture - Water and the Land](#)

[Marine & Ocean](#)

[UV & Sun Protection](#)

[Rainfall & River Conditions](#)



Radar



Sat



Maps

[Rainfall Forecasts](#)

[Seasonal Outlooks](#)

[Climate Variability & Change](#)

[Climate Data Online](#)

[Seasonal Streamflow Forecasts](#)

[Water Storage](#)

MetEye™

[National Weather Services](#)

[Aviation Weather Services](#)


[Defence Services](#)


[Space Weather Services](#)


[Registered User Services](#)

[Industry Solutions](#)

[Supplier Entry Point](#)

 [Facebook](#)

 [Youtube](#)

 [Instagram](#)


[Careers](#) | [Sitemap](#) | [Feedback](#)


[Freedom of Information](#)

[Indigenous Weather Knowledge](#)

[Glossary](#)

[Students and Teachers](#)

 [Twitter](#)

 [Blog](#)

 [RSS](#)

[Bureau Home](#) > [Australia](#) > [New South Wales](#) > [Warnings Summary](#) > **Marine Wind Warning Summary**

Marine Wind Warning Summary

IDN20400

Updated Marine Wind Warning Summary for New South Wales

Issued at 10:33 am EDT on Tuesday 28 January 2025
for the period until midnight EDT Wednesday 29 January 2025.

Wind Warnings for Tuesday 28 January

Gale Warning for the following areas:

Sydney Enclosed Waters, Hunter Coast, Sydney Coast, Illawarra Coast and Eden Coast

Strong Wind Warning for the following areas:

Coffs Coast, Macquarie Coast and Batemans Coast

Wind Warnings for Wednesday 29 January

Strong Wind Warning for the following areas:

Hunter Coast and Sydney Coast

The next marine wind warning summary will be issued by 4:05 pm EDT Tuesday.

Check the latest [Coastal Waters Forecast](#) or [Local Waters Forecast](#) for information on wind, wave and weather conditions for these coastal zones.

Warnings Information

- ▶ [Total Fire Ban and Current Fire Danger Map](#)
- ▶ [Tropical Cyclone Warnings and Information](#)
- ▶ [Wind Warnings Definitions](#)

Coastal Waters Forecasts

- ▶ [New South Wales Forecast Area Map](#)
- ▶ [Detailed wind and wave forecasts on MetEye](#)

Read the Warnings to
see if applicable to
your area

WARNINGS

[WATER](#) | [CLIMATE](#)

[Tropical Cyclones](#)

[Tsunami Warning Centre](#)

[Agriculture - Water and the Land](#)

[Marine & Ocean](#)



Radar



Sat



Maps

[Rainfall Forecasts](#)

[Seasonal Outlooks](#)

[Climate Variability & Change](#)

[Climate Data Online](#)

MetEye™

[National Weather Services](#)

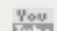
[Aviation Weather Services](#)


[Defence Services](#)

[Space Weather Services](#)


[Registered User Services](#)


 [Facebook](#)

 [Youtube](#)

 [Instagram](#)

 [Twitter](#)

 [Blog](#)

 [RSS](#)

[Careers](#) | [Sitemap](#) | [Feedback](#)

[Freedom of Information](#)

[Indigenous Weather Knowledge](#)

The following directions is to help navigate Meteye to find your local wind predictions.

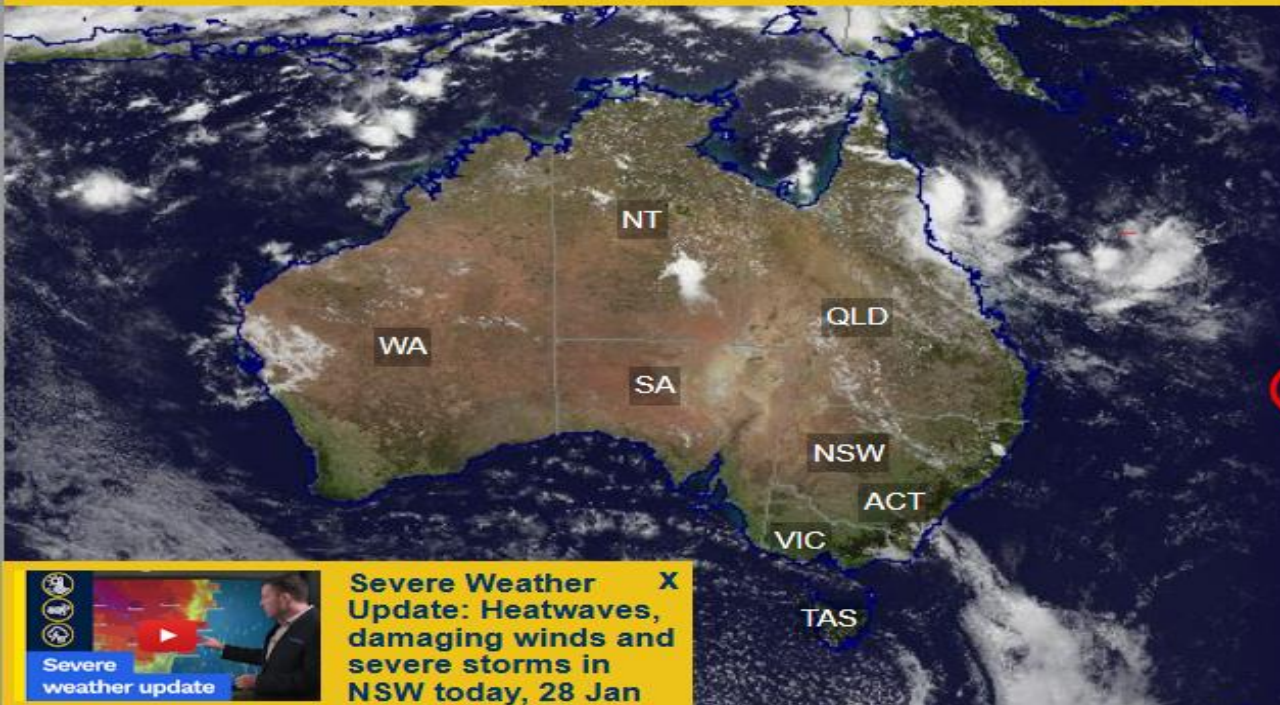
[MetEye](#)



Warnings current

[NSW](#) | [VIC](#) | [QLD](#) | [WA](#) | [SA](#) | [TAS](#) | [ACT](#) | [NT](#)

[Warning services](#)



[> Rain radars](#)

[> Satellite images](#)

[> Weather maps](#)

[> MetEye](#)



A job
like no other

[Jobs in Antarctica](#)

[Apply now](#)

[Advertisement](#)

Severe Weather Update: Heatwaves, damaging winds and severe storms in NSW today, 28 Jan

Weather for Tuesday 28 January

[City observations](#)

Sydney

Now

30.4°

E 22km/h

Max **40°**

Afternoon cool

Melbourne

Now

21.6°

SSE 17km/h

Max **22°**

Partly cloudy

Brisbane

Now

30.7°

NNW 7km/h

Max **32°**

Mostly sunny

Perth

Now

32.1°

ESE 9km/h

Max **37°**

Sunny

Adelaide

Now

26.3°

WSW 20km/h

Max **27°**

Becoming sunny

Hobart

Now

20.6°

SW 26km/h

Max **20°**

Partly cloudy

Terrara

Now

36.5°

WNW 28km/h

Max **37°**

Afternoon cool

Darwin

Now

33.1°

NW 20km/h

Max **33°**

Shower or two

Click on Meteye

[Bureau Home](#) > [Australia](#) > MetEye

MetEye - your eye on the environment™



[FAQ](#) | [MetEye Disclaimer](#) | [MetEye](#)

TEXT
VIEWS

We are building a new website for all Australians. Give your feedback on our test website at [betabom.gov.au](#).

 View the current warnings for Australia

Port Macquarie

Port Macquarie, NSW, 2444

Locate

Find me

Time zone AEDT

LATEST WEATHER

Current Temp, Rain, Wind ...

FORECASTS

Rainfall Forecasts

Wind Forecasts

- ☐ Wind speed and direction (km/h)
 - ☒ Wind speed and direction (knots)
- Updated 28 Jan 2025, 1:20 PM AEDT

☐ Mixing height

Clear

Info

Overlay

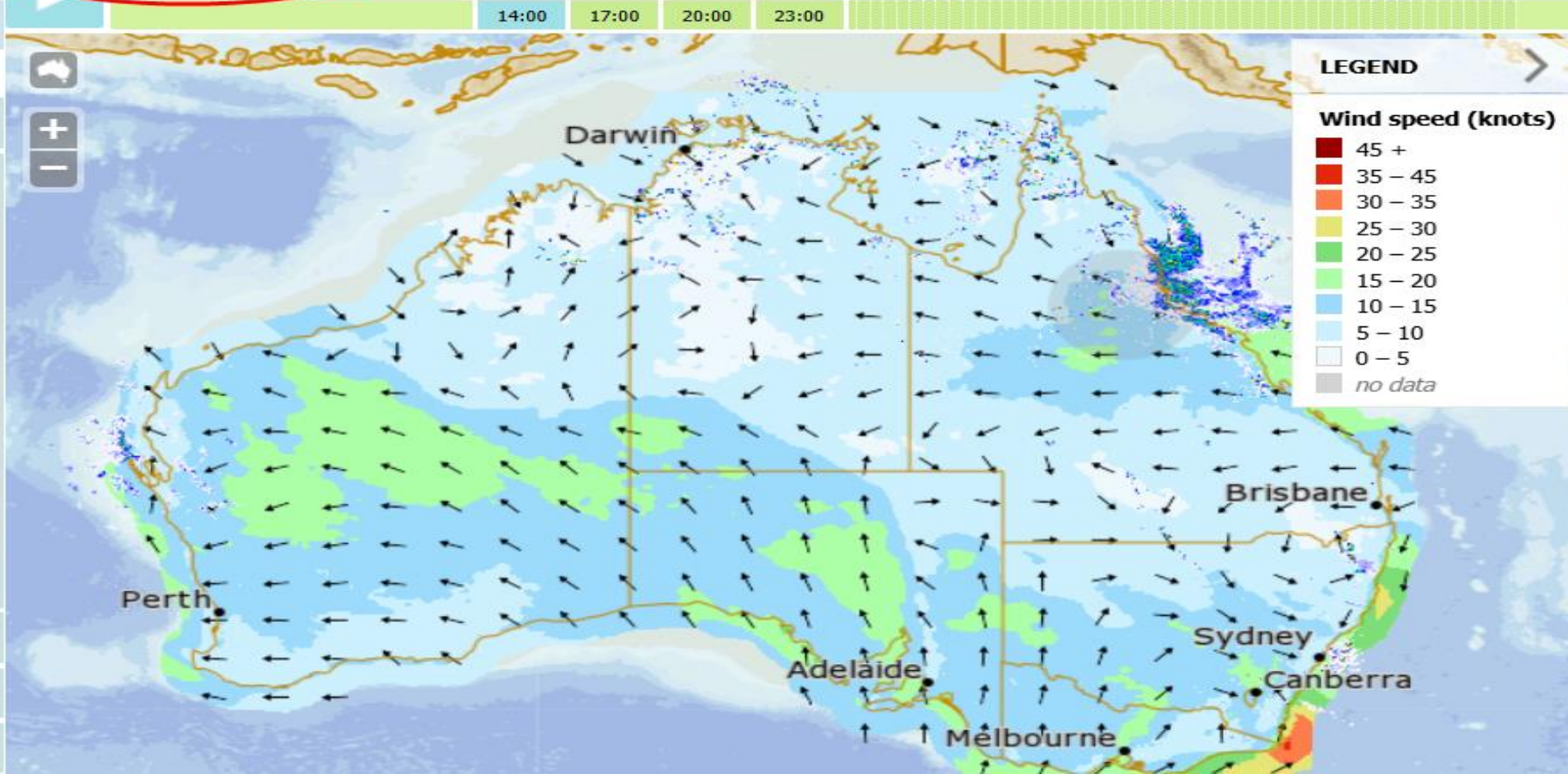
- ☒ Latest rain radar
- Updated 28 Jan 2025, 3:31 PM AEDT
- ☐ Mean Sea Level Pressure (hPa)

Waves Forecasts

Temperature Forecasts

Storms, Snow, Fog, Frost ...

Humidity Forecasts





We are building a new website for all Australians. Give your feedback on our test website at beta.bom.gov.au.

⚠ View the current warnings for Australia

←

Port Macquarie, NSW

Locate

Find me

Time zone AEDT

LATEST WEATHER

Current Temp, Rain, Wind ...

FORECASTS

Rainfall Forecasts

Wind Forecasts

☐ Wind speed and direction (km/h)

☒ Wind speed and direction (knots)

Updated 28 Jan 2025, 1:20 PM AEDT

☐ Mixing height

Clear

Info

Overlay

☒ Latest rain radar

Updated 28 Jan 2025, 3:31 PM AEDT

☐ Mean Sea Level Pressure (hPa)

Waves Forecasts

Temperature Forecasts

Storms, Snow, Fog, Frost ...

Humidity Forecasts

UV Index Forecasts

▶

Tuesday, 28 January 2025

Wed

Thu

Fri

Sat

Sun

Mon

Tue

Forecast for Port Macquarie

See text views for location

Save location

	Tue. 28 Jan	Wed. 29 Jan	Thu. 30 Jan	Fri. 31 Jan	Sat. 1 Feb	Sun. 2 Feb	Mon. 3 Feb
Max (°C)	32	28	28	27	27	26	26
Min (°C)	—	21	21	21	20	19	19
Chance of rain (%)	—	30	30	60	60	40	30
Rainfall range (mm)	—	0 to 1	0 to 1	0 to 7	0 to 6	0 to 1	0 to 1
Issued 28 Jan 2025	Detail	Detail	Detail	Detail	Detail	Detail	Detail

Port Macquarie

Wauchope

Tacking Point

Queens Lake

Camden Haven

Crowdy Head

Taree

10 km

10 nmi

31.49°S, 152.44°E

☒ Place names

☒ Search marker

☐ Saved locations

☐ Forecast locations

☐ Forecast districts

☐ Marine zones

☐ Roads & railways

☐ Rivers & lakes

☐ Catchments

Click on Detail

 [View the current warnings for Australia](#)

UV Index Forecasts

Can change between knots and km/h

☐ Catchments