



BAYSIDE OUTRIGGER CANOE CLUB

**Invites you to the
SQ Zone OC1/2/V1 Race #3 2018**



Saturday 15th of September 2018
Raby Bay Foreshore Park, Masthead Drive,
Cleveland

Race Director: Dave Mason
0421171502 | drmason69@hotmail.com





To our outriggering whanau,

On behalf of Bayside Outrigger Canoe Club's members and committee I'd like to welcome you all back to our second regatta of the year; hosting OC1/OC2 & V1 events on the 15th of September, 2018.

The event will be held off Masthead Drive again, in our challenging waters of Raby Bay, Cleveland.

Our program has been designed in accordance with all AOCRA's regatta requirements and due process. All nominations for this regatta to be completed online on the AOCRA SQ zone webpage.

We look forward to hosting you and your fellow paddlers with what Bayside OCC considers our own brand of hospitality and cultural welcome.

Look forward to seeing you all there

Regards,

Dave Mason
President
Bayside Outrigger Canoe Club





Event Program

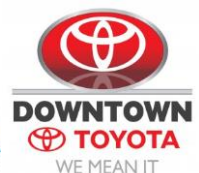
| Race # | Time | Event | Distance |
|----------------|----------------|---|--|
| | 6.30am | Registration Opens | |
| Race #1 | 7.00am | Short Course Briefing – All divisions | Race Venue (Masthead Drive) |
| | 7.15am | OC1 – All SC divisions OC2 – All SC divisions V1 – All SC divisions U19 – V1/OC1 U16 – OC2 SKI/SUP | 8km |
| Race #2 | 8.30am | U14 – V1/OC1 U12 – OC2 AP's | 4km |
| Race #3 | 9.15am | U12 – V1/OC1 | 2km |
| Race #4 | 10am | Minnow – OC6 | 1km |
| Race #5 | 10.15am | U16 – V1/OC1 U14 – OC2 Novice – OC1/OC2/V1 | 6km |
| | 11.30am | Long Course Briefing – All Divisions | Race Start Site (Downwind) |
| Race #6 | 12pm | OC1 – All LC divisions OC2 – All LC divisions V1 – All LC divisions U19 – OC2 SKI/SUP | 16km |

Please Note:

Depending on nominations Bayside OCC reserves the right to split races depending on nomination numbers. Every endeavour will be made to run the long course as a down wind – Bayside OCC will communicate this through Facebook and where possible notifying clubs personally the day prior to the race.

Tide Information

| | Time | Height |
|------|---------|--------|
| High | 12.59am | 1.88m |
| Low | 7.20am | 0.47m |
| High | 1.43pm | 2.03m |
| Low | 8.07pm | 0.77m |





Safety

Each paddler must sign-in at the Bayside OCC registration tent when confirming their registration and canoe number for each race. The following items are mandatory in all canoes PFDs (one per paddler) and leg rope, (V1 & cockpit style canoes require a bailer).

Due to the shallow reefs and numerous hazards we have extra buoys will be placed (particularly for the long course) to avoid any potential craft damage. Channel markers will be followed in addition to course markers which will be outlined on the day. Long course will be run on a rising tide to minimise any potential issues.

Race Courses

Courses will be decided on Friday 14th of September to maximise forecasted conditions.

Registration

PLEASE NOTE: Nominations are required online prior to the event and close at **11pm on Saturday the 8th September 2018. Late fees may apply to any nominations received after this date. The race director may disallow late entries due to support boats numbers.**

IMPORTANT DETAILS AS ADVISED BY SQ REGISTRAR FOR THIS SEASON

- Adaptive paddlers doing the 4km race please register as 21U and enter your designation in the notes of the registration page
- Adaptive paddlers doing other distances register in your age group and add notes
- Any 21U paddler registering will be moved to the opens division

Race Rules

Are you allowed to compete?

Paddlers are reminded of AOCRA's rules and regulations regarding participating in AOCRA sanctioned events. Individuals (OC1/V1) and teams (OC6/V12) are only permitted to take part in said event if recognised as sanctioned competitor/s, which means:

1. The individual/team has registered and paid for the event through the AOCRA website,
2. The individual/team captain, have signed in at the registration desk and provided racing canoe number,
3. The individual/all team members, are current financial member/s of an AOCRA affiliated club, and
4. The individual/all team members are current financial member/s of AOCRA.

Due to insurance implications, if the above criteria are not met, you are to stay off the race course. Non-competing paddlers are not to use the event courses for training, coaching or recreational paddling in club or personal craft while competitors are on the course.





Race Fees – each race

- \$20 per paddler per race – All Senior Events (including ski/SUP)
- \$10 per paddler per race – All Junior Events

Cancellation policy:

The club advises there are alternative courses available to suit most wind conditions however in the unlikely event that cancellation of races occurs, the Club component of the registration fee will not be refunded in order to cover out-of-pocket costs incurred. It is our understanding the AOCRA and SQ Zone would refund their portion of the race fee.

On the day facilities:

A food tent including a barbeque and drinks will be held on site throughout the day. A coffee van will also be available on the day. There will be public toilets available for all to use located at the edge of the main beach.

AOCRA
SQ ZONE
2018/19
OC1/OC2 V1
SERIES DRAW

Each registration to one of the SQZ OC1/OC2 V1 Series Regattas automatically goes in the draw to win an OC2 Wahoo from Oceanswell.

SQZ are proud to support Australian Manufacturers

Drawn at after function of Race 6 - Hosted by Scarborough OCC - December 8th 2018
You must be there to win.
The more regattas you enter the more chances of winning.
Open to financial South Qld Zone Club Paddlers only.

AOCRA
AUSTRALIAN OUTRIGGER
CANOE RACING ASSOCIATION
SQ ZONE OC1/2
MARATHON
SERIES

The background of the poster shows two outrigger canoes on a body of water. The canoe in the foreground is white with orange and black accents and has the word 'Wahoo' written on its side. The second canoe is partially visible behind it.





Site Map:



The regatta will be held from the Raby Bay Foreshore Parkland at the end of Masthead Drive. There is plenty of spaces for car parking in a designated off-street carpark and multiple spaces along the edge of the road with angled parking. Club tents are welcomed to be set up along the front two beaches of the park for spectators.

Trailer Parking:

Please note club's singles trailers will be able to be parked along Masthead Drive however please note limited parking is available along this street due to the popularity of the site. Cars and trailers cannot be parked on the grassed areas of the site.





Race Course:

Conditions will determine the best possible course we can provide on the day. We will endeavour to run a down wind long course and will confirm the secondary launch site for this regatta (finish will be at main venue) prior to the event race day. Final briefings on the morning of the regatta will confirm the exact course for all race distances.

Bayside's Race Director may decide to alter the following junior races if there is a weather change. We will advise paddlers with as much notice as possible on the day. In the event of a wind change we will hold another briefing for the subsequent races.

Please note we paddle in a very high boat traffic area and where possible all races will be kept out of designated boat channels. Please be sure to listen to instructions at briefing and follow the lead boat as there may be numerous small reefs and sandbars across our proposed courses.

Proposed Long Course Downwind launch site:

Launch site: WH Yeo Park, Eagle Street, Victoria Point. Parking is available along this park with launching available from the beach front. Race start will be buoys on the water.

Alternative launch site: Pandanus Beach, Wynnum Esplanade/Charlotte Street, Wynnum. Parking is available in the carpark and off street parking along the Esplanade. This course is extremely due to wind conditions.

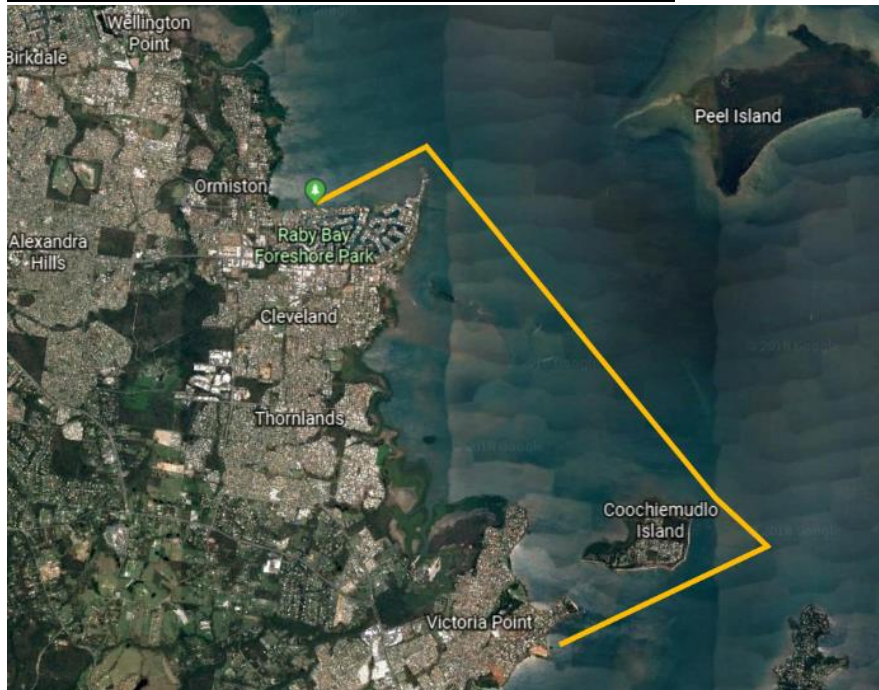
Bayside OCC and Race Director reserve the right to hold a long course with the same start and finish depending on prevailing winds on the day.

All Long Course paddlers must sign it at Masthead Drive regardless of the starting line for the course. Registration will only be set up at Masthead Drive.

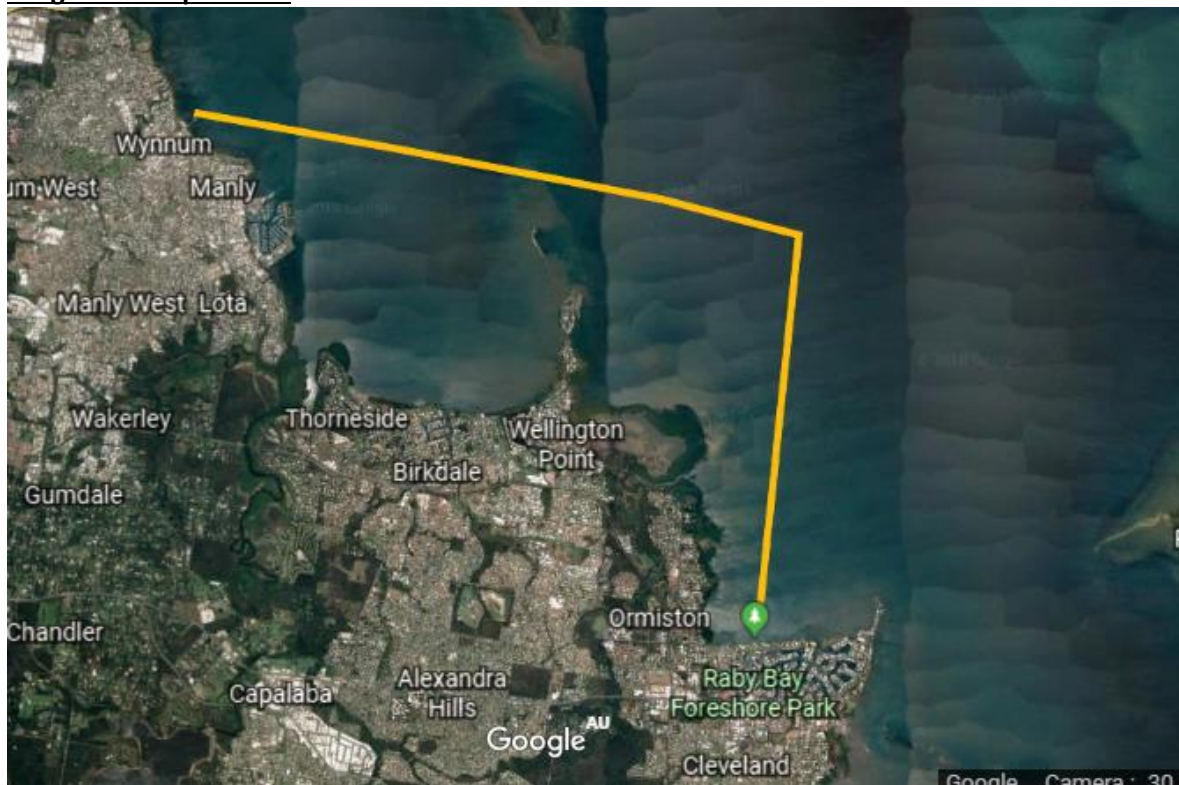




Long Course Option #1 (likely downwind SE wind):



Long Course Option #2:

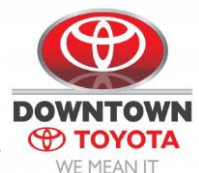




Short Course Option #1



Short Course Option #2:





Junior Races:

Depending on the wind conditions will be paddled in a straight out and back or triangular course.

